

Anti-NCAPH antibody (1-250) (STJ117335)

STJ117335

GENERAL INFORMATION

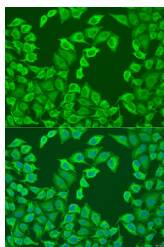
Product Type	Primary antibodies
Short Description	
Applications	IF/ICC/ELISA
Host/Source	Rabbit
Reactivity	Human

PRODUCT PROPERTIES

Clonality	Polyclonal
Clone ID	
Concentration	Lot specific
Conjugation	Unconjugated
Purification	Affinity purification
Dilution	IF/ICC:1:50-1:200
Range	ELISA:Recommended starting concentration is 1 µg/mL. Please optimize the concentration based on your specific assay requirements.
Formulation	PBS with 0.02% Sodium Azide, 50% Glycerol, pH 7.3.
Isotype	IgG
Storage	Store at -20°C for up to 1 year from the date of receipt, and avoid repeat freeze-thaw cycles.
Instruction	

TARGET INFORMATION

Gene ID	23397
Gene Symbol	NCAPH
Uniprot ID	CND2_HUMAN
Immunogen	
Immunogen Region	1-250
Specificity	Recombinant fusion protein containing a sequence corresponding to amino acids 1-250 of human NCAPH (NP_056156.2).
Immunogen Sequence	MGPPGPALPATMNNSSSETR GHPHSASSPSERVFPMPPLPR KAPLNIPGTPVLEDFPQNDD EKERLQRRRSRVFDLQFSTD SPRLLASPPSSRSIDISATIP KFTNTQITEHYSTCIKLSTE NKITTKNAFGLHLIDFMSEI LKQKDEPTNFKVAAGTLDA STKIYAVRVDVAVHADVYRVL GGLGKDAPSLVEEGHVADG SATEMGTTKKAVKPKKKHLH RTIEQNINNLNVSEADKRC



Immunofluorescence analysis of U2OS cells using NCAPH antibody (STJ117335) at dilution of 1:100. Blue: DAPI for nuclear staining.