

## Anti-SLCO6A1 antibody (480-580) (STJ117162)

STJ117162

### GENERAL INFORMATION

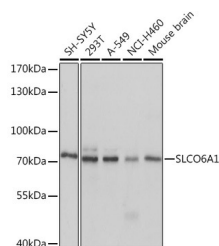
<b>Product Type</b>	Primary antibodies
<b>Short Description</b>	
<b>Applications</b>	WB/ELISA
<b>Host/Source</b>	Rabbit
<b>Reactivity</b>	Human/Mouse/Rat

### PRODUCT PROPERTIES

<b>Clonality</b>	Polyclonal
<b>Clone ID</b>	
<b>Concentration</b>	Lot specific
<b>Conjugation</b>	Unconjugated
<b>Purification</b>	Affinity purification
<b>Dilution Range</b>	WB:1:500-1:2000 ELISA:Recommended starting concentration is 1 Mu g/mL. Please optimize the concentration based on your specific assay requirements.
<b>Formulation</b>	PBS with 0.01% Thimerosal, 50% Glycerol, pH 7.3.
<b>Isotype</b>	IgG
<b>Storage</b>	Store at -20°C for up to 1 year from the date of receipt, and avoid repeat freeze-thaw cycles.
<b>Instruction</b>	

### TARGET INFORMATION

<b>Gene ID</b>	133482
<b>Gene Symbol</b>	SLCO6A1
<b>Uniprot ID</b>	SO6A1_HUMAN
<b>Immunogen</b>	
<b>Immunogen</b>	480-580
<b>Region</b>	
<b>Specificity</b>	Recombinant fusion protein containing a sequence corresponding to amino acids 480-580 of human SLCO6A1 (NP_775759.3).
<b>Immunogen</b>	VQFAGINEDYDGTGKLGNT APCNEKRCSSSIYSSICGR DDIEYFSPCFAGCTYSKAQN QKKMYNCSCI EGLITADA
<b>Sequence</b>	EGDFIDARPGKDAKCYKLP L



Western blot analysis of various lysates using SLCO6A1 Rabbit polyclonal antibody (STJ117162) at 1:1000 dilution. Secondary antibody: HRP Goat Anti-Rabbit IgG (H+L) (STJ5000856) at 1:10000 dilution. Lysates/proteins: 25 Mu g per lane. Blocking buffer: 3% nonfat dry milk in TBST. Detection: ECL Basic Kit. Exposure time: 1s.