

Anti-BATF3 antibody (1-127) (STJ117106)

STJ117106

GENERAL INFORMATION

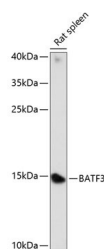
Product Type	Primary antibodies
Short Description	
Applications	WB/ELISA
Host/Source	Rabbit
Reactivity	Rat

PRODUCT PROPERTIES

Clonality	Polyclonal
Clone ID	
Concentration	Lot specific
Conjugation	Unconjugated
Purification	Affinity purification
Dilution Range	WB:1:500-1:2000
	ELISA: Recommended starting concentration is 1 µg/mL. Please optimize the concentration based on your specific assay requirements.
Formulation	PBS with 0.01% Thimerosal, 50% Glycerol, pH 7.3.
Isotype	IgG
Storage Instruction	Store at -20°C for up to 1 year from the date of receipt, and avoid repeat freeze-thaw cycles.

TARGET INFORMATION

Gene ID	55509
Gene Symbol	BATF3
Uniprot ID	BATF3_HUMAN
Immunogen	
Immunogen Region	1-127
Specificity	Recombinant fusion protein containing a sequence corresponding to amino acids 1-127 of human BATF3 (NP_061134.1).
Immunogen Sequence	MSQGLPAAGSVLQRSVAAPG NQPQPQQQSPEDDDRKVR RREKNRVAAQSRKKQTQKA DKLHEEYESLEQENTMLRRE IGKLTEELKHLTEALKEHEK MCPLLLCPMNFVPPRPDP VAGCLPR



Western blot analysis of lysates from rat spleen, using BATF3 Rabbit polyclonal antibody (STJ117106) at 1:1000 dilution. Secondary antibody: HRP Goat Anti-Rabbit IgG (H+L) (STJS000856) at 1:10000 dilution. Lysates/proteins: 25 µg per lane. Blocking buffer: 5% nonfat dry milk in TBST. Detection: ECL Basic Kit. Exposure time: 30s.

This product is suitable for in-vitro studies under the RESEARCH USE ONLY [RUO] licence. This product must not be used as for diagnostic or other medical purposes.
St John's Laboratory Ltd, Knowledge Dock Business Centre, University Way, London, E16 2RD | Tel: 0208 223 3081