

Anti-ZCCHC17 antibody (1-241) (STJ117091)

STJ117091

GENERAL INFORMATION

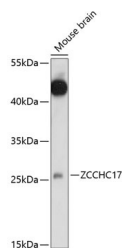
Product Type	Primary antibodies
Short Description	
Applications	WB/ELISA
Host/Source	Rabbit
Reactivity	Mouse

PRODUCT PROPERTIES

Clonality	Polyclonal
Clone ID	
Concentration	Lot specific
Conjugation	Unconjugated
Purification	Affinity purification
Dilution	WB:1:500-1:2000
Range	ELISA:Recommended starting concentration is 1 Mu g/mL. Please optimize the concentration based on your specific assay requirements.
Formulation	PBS with 0.01% Thimerosal, 50% Glycerol, pH 7.3.
Isotype	IgG
Storage	Store at -20°C for up to 1 year from the date of receipt, and avoid repeat freeze-thaw cycles.
Instruction	

TARGET INFORMATION

Gene ID	51538
Gene Symbol	ZCCHC17
Uniprot ID	ZCC17_HUMAN
Immunogen	
Immunogen Region	1-241
Specificity	Recombinant fusion protein containing a sequence corresponding to amino acids 1-241 of human ZCCHC17 (NP_057589.2).
Immunogen Sequence	MNSGRPETMENLPALYTIFQ GEVAMVTDYGAFIKIPGCRK QGLVHRTHMSSCRVDKPSEI VDVGDKVVVKLIGREMKNDR IKVLSLMKVVNQGTGKDLP NNVIIEQEERRRRSFQDYTG QKITLEAVLNTTCKKCGCKG HFAKDCFMQPGGTKYSLIPD EEEEEEEAKSAEFKPDPTR NPSRKRRKKEKKKKHRDRKS SDSSDSDSESDTGKRRHTS KDSKAAKKKKKKKHKKKK



Western blot analysis of lysates from mouse brain, using ZCCHC17 Rabbit polyclonal antibody (STJ117091) at 1:1000 dilution. Secondary antibody: HRP Goat Anti-Rabbit IgG (H+L) (STJ5000856) at 1:10000 dilution. Lysates/proteins: 25 Mu g per lane. Blocking buffer: 3% nonfat dry milk in TBST. Detection: ECL Basic Kit. Exposure time: 30s.

This product is suitable for in-vitro studies under the RESEARCH USE ONLY [RUO] licence. This product must not be used as for diagnostic or other medical purposes.
St John's Laboratory Ltd, Knowledge Dock Business Centre, University Way, London, E16 2RD | Tel: 0208 223 3081