

Anti-KLK5 antibody (200-293) (STJ117063)

STJ117063

GENERAL INFORMATION

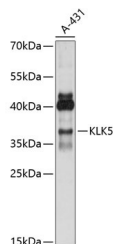
Product Type	Primary antibodies
Short Description	
Applications	WB/ELISA
Host/Source	Rabbit
Reactivity	Human

PRODUCT PROPERTIES

Clonality	Polyclonal
Clone ID	
Concentration	Lot specific
Conjugation	Unconjugated
Purification	Affinity purification
Dilution Range	WB:1:500-1:2000 ELISA:Recommended starting concentration is 1 Mu g/mL. Please optimize the concentration based on your specific assay requirements.
Formulation	PBS with 0.01% Thimerosal, 50% Glycerol, pH 7.3.
Isotype	IgG
Storage Instruction	Store at-20°C for up to 1 year from the date of receipt, and avoid repeat freeze-thaw cycles.

TARGET INFORMATION

Gene ID	25818
Gene Symbol	KLK5
Uniprot ID	KLK5_HUMAN
Immunogen	
Immunogen Region	200-293
Specificity	A synthetic peptide corresponding to a sequence within amino acids 200-293 of human KLK5 (NP_001070959.1).
Immunogen Sequence	FPKVLQCLNISVLSQKRCED AYPRQIDDTMFCAGDKAGRD SCQGDSGGPVVCNGLSLQGLV SWGDYPCARPNRPGVYTNLC KFTKWIQETIQANS



Western blot analysis of lysates from A-431 cells, using KLK5 Rabbit polyclonal antibody (STJ117063) at 1:1000 dilution. Secondary antibody: HRP Goat Anti-Rabbit IgG (H+L) (STJS000856) at 1:10000 dilution. Lysates/proteins: 25 Mu g per lane. Blocking buffer: 3% nonfat dry milk in TBST. Detection: ECL Enhanced Kit. Exposure time: 30s.

This product is suitable for in-vitro studies under the RESEARCH USE ONLY [RUO] licence. This product must not be used as for diagnostic or other medical purposes.
St John's Laboratory Ltd, Knowledge Dock Business Centre, University Way, London, E16 2RD | Tel: 0208 223 3081