

Anti-DDX21 antibody (1-180) (STJ117020)

STJ117020

GENERAL INFORMATION

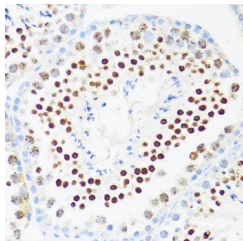
Product Type	Primary antibodies
Short Description	
Applications	WB/IHC-P/IF/ICC/ELISA
Host/Source	Rabbit
Reactivity	Human/Mouse

PRODUCT PROPERTIES

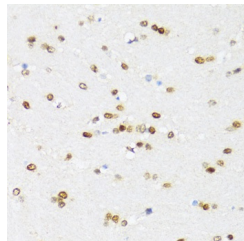
Clonality	Polyclonal
Clone ID	
Concentration	Lot specific
Conjugation	Unconjugated
Purification	Affinity purification
Dilution	WB:1:1000-1:5000
Range	IHC-P:1:50-1:200 IF/ICC:1:50-1:200 ELISA:Recommended starting concentration is 1 µg/mL. Please optimize the concentration based on your specific assay requirements.
Formulation	PBS with 0.01% Thimerosal, 50% Glycerol, pH 7.3.
Isotype	IgG
Storage	Store at -20°C for up to 1 year from the date of receipt, and avoid repeat freeze-thaw cycles.
Instruction	

TARGET INFORMATION

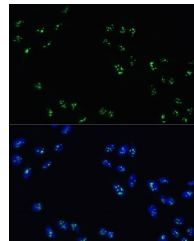
Gene ID	9188
Gene Symbol	DDX21
Uniprot ID	DDX21_HUMAN
Immunogen	
Immunogen Region	1-180
Specificity	Recombinant fusion protein containing a sequence corresponding to amino acids 1-180 of human DDX21 (NP_004719.2).
Immunogen Sequence	MPGKLRS DAGLES DTAMKKG ETLRKQTEEEKKPKSDK TEEIAEEEE TVFPKAKQVKK KAEPSEVDMNSPKSKKAKKK EEPSQNDISP KTKSLRKKKE PIEKKVSSKTKVTKNEEP SEEEIDAPKPKMKKEKEMN GETREKSPKLKNGFPHPPEPD CNPSEAASEESNSEIEQEIP



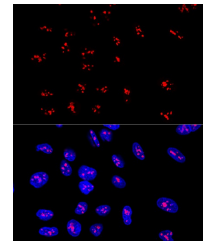
Immunohistochemistry analysis of paraffin-embedded mouse testis using DDX21 antibody (STJ117020) at dilution of 1:100 (40x lens). Perform microwave antigen retrieval with 10 mM PBS buffer pH 7.2 before commencing with immunohistochemistry staining protocol.



Immunohistochemistry analysis of paraffin-embedded mouse brain using DDX21 antibody (STJ117020) at dilution of 1:100 (40x lens). Perform microwave antigen retrieval with 10 mM PBS buffer pH 7.2 before commencing with immunohistochemistry staining protocol.



Immunofluorescence analysis of U-2 OS cells using DDX21 antibody (STJ117020) at dilution of 1:100. Blue: DAPI for nuclear staining.



Confocal immunofluorescence analysis of U2OS cells using DDX21 Polyclonal Antibody (STJ117020) at dilution of 1:100. Blue: DAPI for nuclear staining.

This product is suitable for in-vitro studies under the RESEARCH USE ONLY [RUO] licence. This product must not be used as for diagnostic or other medical purposes.
St John's Laboratory Ltd, Knowledge Dock Business Centre, University Way, London, E16 2RD | Tel: 0208 223 3081