

Anti-S100A5 antibody (1-92) (STJ116979)

STJ116979

GENERAL INFORMATION

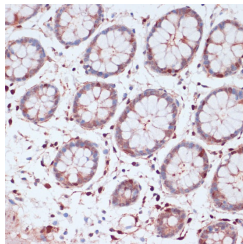
Product Type	Primary antibodies
Short Description	
Applications	WB/IHC-P/ELISA
Host/Source	Rabbit
Reactivity	Human

PRODUCT PROPERTIES

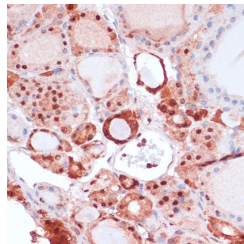
Clonality	Polyclonal
Clone ID	
Concentration	Lot specific
Conjugation	Unconjugated
Purification	Affinity purification
Dilution Range	WB:1:500-1:2000 IHC-P:1:100-1:200 ELISA:Recommended starting concentration is 1 Mu g/mL. Please optimize the concentration based on your specific assay requirements.
Formulation	PBS with 0.01% Thimerosal, 50% Glycerol, pH 7.3.
Isotype	IgG
Storage Instruction	Store at -20°C for up to 1 year from the date of receipt, and avoid repeat freeze-thaw cycles.

TARGET INFORMATION

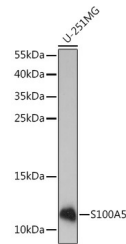
Gene ID	6276
Gene Symbol	S100A5
Uniprot ID	S10A5_HUMAN
Immunogen	
Immunogen Region	1-92
Specificity	Recombinant fusion protein containing a sequence corresponding to amino acids 1-92 of human S100A5 (NP_002953.2).
Immunogen Sequence	METPLEKALTTMVTTFKYS GREGSKLTLSRKELKELIKK ELCLGEMKESSIDDLMKSLD KNSDQEIDFKEYSVFLTMLC MAYNDDFFLEDNK



Immunohistochemistry analysis of S100A5 in paraffin-embedded human colon using S100A5 Rabbit polyclonal antibody (STJ116979) at dilution of 1:100 (40x lens). Perform microwave antigen retrieval with 10 mM PBS buffer pH 7.2 before commencing with immunohistochemistry staining protocol.



Immunohistochemistry analysis of S100A5 in paraffin-embedded human thyroid cancer using S100A5 Rabbit polyclonal antibody (STJ116979) at dilution of 1:100 (40x lens). Perform microwave antigen retrieval with 10 mM PBS buffer pH 7.2 before commencing with immunohistochemistry staining protocol.



Western blot analysis of lysates from U-251MG cells, using S100A5 Rabbit polyclonal antibody (STJ116979) at 1:1000 dilution. Secondary antibody: HRP Goat Anti-Rabbit IgG (H+L) (STJ5000656) at 1:10000 dilution. Lysates/proteins: 25 Mu g per lane. Blocking buffer: 3% nonfat dry milk in TBST. Detection: ECL Enhanced Kit. Exposure time: 3min.

This product is suitable for in-vitro studies under the RESEARCH USE ONLY [RUO] licence. This product must not be used as for diagnostic or other medical purposes.
St John's Laboratory Ltd, Knowledge Dock Business Centre, University Way, London, E16 2RD | Tel: 0208 223 3081