

Anti-RBBP6 antibody (1240-1355) (STJ116976)

STJ116976

GENERAL INFORMATION

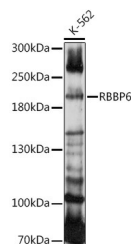
Product Type	Primary antibodies
Short Description	
Applications	WB/ELISA
Host/Source	Rabbit
Reactivity	Human/Mouse/Rat

PRODUCT PROPERTIES

Clonality	Polyclonal
Clone ID	
Concentration	Lot specific
Conjugation	Unconjugated
Purification	Affinity purification
Dilution Range	WB:1:500-1:1000 ELISA:Recommended starting concentration is 1 Mu g/mL. Please optimize the concentration based on your specific assay requirements.
Formulation	PBS with 0.05% Proclin300, 50% Glycerol, pH 7.3.
Isotype	IgG
Storage	Store at -20°C for up to 1 year from the date of receipt, and avoid repeat freeze-thaw cycles.
Instruction	

TARGET INFORMATION

Gene ID	5930
Gene Symbol	RBBP6
Uniprot ID	RBBP6_HUMAN
Immunogen	
Immunogen Region	1240-1355
Specificity	Recombinant fusion protein containing a sequence corresponding to amino acids 1240-1355 of human RBBP6 (NP_008841.2).
Immunogen Sequence	SKVKQEKVKGKVRKVTGTE GSSSTLVDTSTSTGGSPV RKSEKTDTKRTVIKTMEEY NNDNTAPAEDVIIMIQVPQS KWDKDDFESEEDVKSTQPI SSVGKPASVIKNVSTK



Western blot analysis of extracts of K-562 cells, using RBBP6 antibody (STJ116976) at 1:1000 dilution. Secondary antibody: HRP Goat Anti-Rabbit IgG (H+L) (STJ5000856) at 1:10000 dilution. Lysates/proteins: 25 Mu g per lane. Blocking buffer: 3% nonfat dry milk in TBST. Detection: ECL Enhanced Kit. Exposure time: 90s.

This product is suitable for in-vitro studies under the RESEARCH USE ONLY [RUO] licence. This product must not be used as for diagnostic or other medical purposes.
St John's Laboratory Ltd, Knowledge Dock Business Centre, University Way, London, E16 2RD | Tel: 0208 223 3081