

**Anti-MAP2K2 antibody (1-100) (STJ116970)**  
STJ116970

**GENERAL INFORMATION**

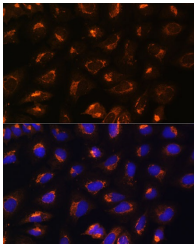
<b>Product Type</b>	Primary antibodies
<b>Short Description</b>	
<b>Applications</b>	WB/IHC-P/IF/CC/ELISA
<b>Host/Source</b>	Rabbit
<b>Reactivity</b>	Human/Mouse/Rat

**PRODUCT PROPERTIES**

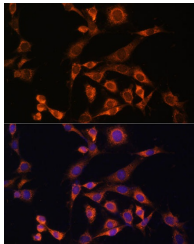
<b>Clonality</b>	Polyclonal
<b>Clone ID</b>	
<b>Concentration</b>	Lot specific
<b>Conjugation</b>	Unconjugated
<b>Purification</b>	Affinity purification
<b>Dilution Range</b>	WB:1:500-1:1000 IHC-P:1:100-1:200 IF/CC:1:50-1:200 ELISA:Recommended starting concentration is 1 Mu g/mL. Please optimize the concentration based on your specific assay requirements.
<b>Formulation</b>	PBS with 0.01% Thimerosal, 50% Glycerol, pH 7.3.
<b>Isotype</b>	IgG
<b>Storage Instruction</b>	Store at -20°C for up to 1 year from the date of receipt, and avoid repeat freeze-thaw cycles.

**TARGET INFORMATION**

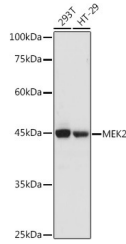
<b>Gene ID</b>	5605
<b>Gene Symbol</b>	MAP2K2
<b>Uniprot ID</b>	MP2K2_HUMAN
<b>Immunogen</b>	
<b>Immunogen Region</b>	1-100
<b>Specificity</b>	A synthetic peptide corresponding to a sequence within amino acids 1-100 of human MEK2 (NP_109587.1).
<b>Immunogen Sequence</b>	MLARRKPVLPAITNPITAE GPSPTSEGASEANLVDLQKK LEELELDEQQKKRLEAFLTQ KAKVGELKDDDFERISELGA GNGGVVTKVQHRPSGLIMAR



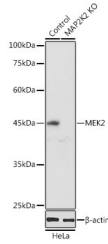
Immunofluorescence analysis of U2OS cells using [KO Validated] MEK2 Rabbit polyclonal antibody (STJ116970) at dilution of 1:100. Blue: DAPI for nuclear staining.



Immunofluorescence analysis of NIH/3T3 cells using [KO Validated] MEK2 Rabbit polyclonal antibody (STJ116970) at dilution of 1:100. Blue: DAPI for nuclear staining.



Western blot analysis of various lysates using [KO Validated] MEK2 Rabbit polyclonal antibody (STJ116970) at 1:1000 dilution. Secondary antibody: HRP Goat Anti-Rabbit IgG (H+L) (STJ5000856) at 1:10000 dilution. Lysates/proteins: 25 Mu g per lane. Blocking buffer: 3% nonfat dry milk in TBST. Detection: ECL Basic Kit. Exposure time: 90s.



Western blot analysis of lysates from wild type (WT) and MEK2 knockout (KO) HeLa cells, using [KO Validated] MEK2 Rabbit polyclonal antibody (STJ116970) at 1:1000 dilution. Secondary antibody: HRP Goat Anti-Rabbit IgG (H+L) (STJ5000856) at 1:10000 dilution. Lysates/proteins: 25 Mu g per lane. Blocking buffer: 3% nonfat dry milk in TBST. Detection: ECL Basic Kit. Exposure time: 90s.