

Anti-PDE6D antibody (1-150) (STJ116962)

STJ116962

GENERAL INFORMATION

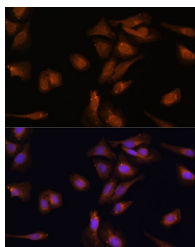
Product Type	Primary antibodies
Short Description	
Applications	WB/IF/ICC/ELISA
Host/Source	Rabbit
Reactivity	Human/Mouse/Rat

PRODUCT PROPERTIES

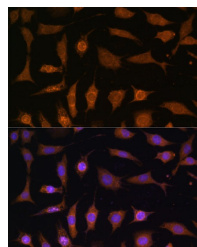
Clonality	Polyclonal
Clone ID	
Concentration	Lot specific
Conjugation	Unconjugated
Purification	Affinity purification
Dilution	WB:1:500-1:2000
Range	IF/CC:1:50-1:100
	ELISA:Recommended starting concentration is 1 µg/mL. Please optimize the concentration based on your specific assay requirements.
Formulation	PBS with 0.01% Thimerosal, 50% Glycerol, pH 7.3.
Isotype	IgG
Storage Instruction	Store at -20°C for up to 1 year from the date of receipt, and avoid repeat freeze-thaw cycles.

TARGET INFORMATION

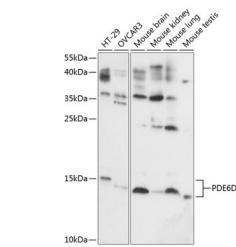
Gene ID	5147
Gene Symbol	PDE6D
Uniprot ID	PDE6D_HUMAN
Immunogen	
Immunogen Region	1-150
Specificity	Recombinant fusion protein containing a sequence corresponding to amino acids 1-150 of human PDE6D (NP_002592.1).
Immunogen Sequence	MSAKDERAREILRGFKLNWM NLRDAETGKILWQGTEDLSV PGVEHEARVPKILKCKAVS RELNFSSTEQMEKFRLEQKV YFKGQCLEEWFFFGFVIPN STNTWQSLIEAAPESQMMMPA SVLTGNVIETKFFDDDLLV STSRVRLFYV



Immunofluorescence analysis of U-2 OS cells using PDE6D Rabbit polyclonal antibody (STJ116962) at dilution of 1:100 (40x lens). Secondary antibody: Cy3 Goat Anti-Rabbit IgG (H+L) at 1:500 dilution. Blue: DAPI for nuclear staining.



Immunofluorescence analysis of L929 cells using PDE6D Rabbit polyclonal antibody (STJ116962) at dilution of 1:100 (40x lens). Secondary antibody: Cy3 Goat Anti-Rabbit IgG (H+L) at 1:500 dilution. Blue: DAPI for nuclear staining.



Western blot analysis of various lysates using PDE6D Rabbit polyclonal antibody (STJ116962) at 1:1000 dilution. Secondary antibody: HRP-Goat Anti-Rabbit IgG (H+L) (STJ5000856) at 1:10000 dilution. Lysates/proteins: 25 µg per lane. Blocking buffer: 3% nonfat dry milk in TBST. Detection: ECL Basic Kit. Exposure time: 10s.