

## Anti-NPPA antibody (26-151) (STJ116955)

STJ116955

### GENERAL INFORMATION

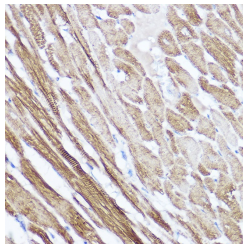
<b>Product Type</b>	Primary antibodies
<b>Short Description</b>	
<b>Applications</b>	WB/IHC-P/ELISA
<b>Host/Source</b>	Rabbit
<b>Reactivity</b>	Mouse/Rat

### PRODUCT PROPERTIES

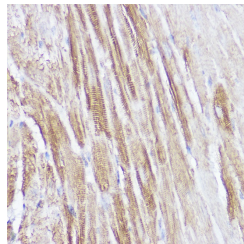
<b>Clonality</b>	Polyclonal
<b>Clone ID</b>	
<b>Concentration</b>	Lot specific
<b>Conjugation</b>	Unconjugated
<b>Purification</b>	Affinity purification
<b>Dilution Range</b>	WB:1:500-1:1000 IHC-P:1:50-1:200 ELISA:Recommended starting concentration is 1 Mu g/mL. Please optimize the concentration based on your specific assay requirements.
<b>Formulation</b>	PBS with 0.05% Proclin300, 50% Glycerol, pH 7.3.
<b>Isotype</b>	IgG
<b>Storage Instruction</b>	Store at -20°C for up to 1 year from the date of receipt, and avoid repeat freeze-thaw cycles.

### TARGET INFORMATION

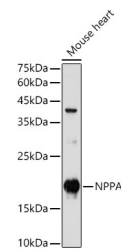
<b>Gene ID</b>	4878
<b>Gene Symbol</b>	NPPA
<b>Uniprot ID</b>	ANF_HUMAN
<b>Immunogen</b>	
<b>Immunogen Region</b>	26-151
<b>Specificity</b>	A synthetic peptide corresponding to a sequence within amino acids 1-100 of human NPPA (NP_006163.1).
<b>Immunogen Sequence</b>	LTWQEIMSITE LQGLNAPSE PSFEPQAPAPYLGPPTTTC PCSIHDPDSGFLPPPPYEL PASTSHVPDPPSYGNMAIP VSKPLSLSGLLSEPLQDPLA LLDIGLPAGPPKQEDPESD SGLSLN



Immunohistochemistry analysis of paraffin-embedded rat heart using NPPA Rabbit polyclonal antibody (STJ116955) at dilution of 1:100 (40x lens). Perform high pressure antigen retrieval with 10 mM citrate buffer pH 6. 0 before commencing with immunohistochemistry staining protocol.



Immunohistochemistry analysis of paraffin-embedded mouse heart using NPPA Rabbit polyclonal antibody (STJ116955) at dilution of 1:100 (40x lens). Perform high pressure antigen retrieval with 10 mM citrate buffer pH 6. 0 before commencing with immunohistochemistry staining protocol.



Western blot analysis of extracts of Mouse heart, using NPPA antibody (STJ116955) at 1:1000 dilution. Secondary antibody: HRP Goat Anti-Rabbit IgG (H+L) (STJS000856) at 1:10000 dilution. Lysates/proteins: 25 Mu g per lane. Blocking buffer: 3% nonfat dry milk in TBST. Detection: ECL Enhanced Kit. Exposure time: 180s.