

Anti-FOXS1 antibody (121-330) (STJ116932)
STJ116932

GENERAL INFORMATION

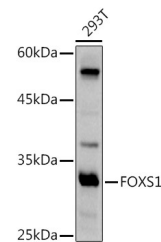
Product Type	Primary antibodies
Short Description	
Applications	WB/ELISA
Host/Source	Rabbit
Reactivity	Human/Rat

PRODUCT PROPERTIES

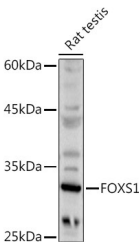
Clonality	Polyclonal
Clone ID	
Concentration	Lot specific
Conjugation	Unconjugated
Purification	Affinity purification
Dilution	WB:1:500-1:1000
Range	ELISA:Recommended starting concentration is 1 Mu g/mL. Please optimize the concentration based on your specific assay requirements.
Formulation	PBS with 0.05% Proclin300, 50% Glycerol, pH 7.3.
Isotype	IgG
Storage	Store at-20°C for up to 1 year from the date of receipt, and avoid repeat freeze-thaw cycles.
Instruction	

TARGET INFORMATION

Gene ID	2307
Gene Symbol	FOXS1
Uniprot ID	FOXS1_HUMAN
Immunogen	
Immunogen Region	121-330
Specificity	Recombinant fusion protein containing a sequence corresponding to amino acids 121-330 of human FOXS1 (NP_004109.1).
Immunogen Sequence	EGTRGPAKARRGPLRATSQD PGVNPATTGRQCSFPPELPD PKGLSFGGLVGAMPASMCPA TTDGRPRPPMEPKKEISTPKP ACPGELPVATSSSSCPAFGF PAGFSEAESFNKAPTPLVSP ESGIGSSYQCRLQALNFCMG ADPGLEHLLASAAPSAPPT PPGSLRAPLPLPTDHKEPVW AGGFPVQGGSGYPLGLTPCL YRTPGMFFFE



Western blot analysis of extracts of 293T cells, using FOXS1 antibody (STJ116932) at 1:500 dilution. Secondary antibody: HRP Goat Anti-Rabbit IgG (H+L) (STJS000856) at 1:10000 dilution. Lysates/proteins: 25 Mu g per lane. Blocking buffer: 3% nonfat dry milk in TBST. Detection: ECL Basic Kit. Exposure time: 90s.



Western blot analysis of extracts of Rat testis, using FOXS1 antibody (STJ116932) at 1:500 dilution. Secondary antibody: HRP Goat Anti-Rabbit IgG (H+L) (STJS000856) at 1:10000 dilution. Lysates/proteins: 25 Mu g per lane. Blocking buffer: 3% nonfat dry milk in TBST. Detection: ECL Basic Kit. Exposure time: 30s.

This product is suitable for in-vitro studies under the RESEARCH USE ONLY [RUO] licence. This product must not be used as for diagnostic or other medical purposes.
St John's Laboratory Ltd, Knowledge Dock Business Centre, University Way, London, E16 2RD | Tel: 0208 223 3081