

## Anti-CDK11B antibody (1-130) (STJ116915)

STJ116915

### GENERAL INFORMATION

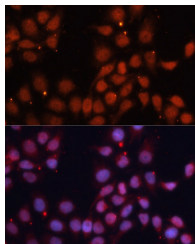
<b>Product Type</b>	Primary antibodies
<b>Short Description</b>	
<b>Applications</b>	IF/ICC/ELISA
<b>Host/Source</b>	Rabbit
<b>Reactivity</b>	Human/Mouse/Rat

### PRODUCT PROPERTIES

<b>Clonality</b>	Polyclonal
<b>Clone ID</b>	
<b>Concentration</b>	Lot specific
<b>Conjugation</b>	Unconjugated
<b>Purification</b>	Affinity purification
<b>Dilution Range</b>	IF/ICC:1:50-1:200
	ELISA: Recommended starting concentration is 1 µg/mL. Please optimize the concentration based on your specific assay requirements.
<b>Formulation</b>	PBS with 0.01% Thimerosal, 50% Glycerol, pH 7.3.
<b>Isotype</b>	IgG
<b>Storage</b>	Store at -20°C for up to 1 year from the date of receipt, and avoid repeat freeze-thaw cycles.
<b>Instruction</b>	

### TARGET INFORMATION

<b>Gene ID</b>	984
<b>Gene Symbol</b>	CDK11B
<b>Uniprot ID</b>	CD11B_HUMAN
<b>Immunogen</b>	
<b>Immunogen Region</b>	1-130
<b>Specificity</b>	Recombinant fusion protein containing a sequence corresponding to amino acids 1-130 of human CDK11B (NP_277021.2).
<b>Immunogen Sequence</b>	MGDEKDSWKVKTLDEILQEK KRRKEQEEKAEIKRLKNSDD RDSKRDSLEEGELRDHRMEI TIRNSPYRREDSMEDRGEED DSLAIKPPQQMSRKEKAHHR KDEKRKEKRRHRSHSAEGGK HARVKEKERE



Immunofluorescence analysis of HeLa cells using CDK11B Rabbit polyclonal antibody (STJ116915) at dilution of 1:100. Secondary antibody: Cy3 Goat Anti-Rabbit IgG (H+L) at 1:500 dilution. Blue: DAPI for nuclear staining.