

Anti-CD36 antibody (50-150) (STJ116914)

STJ116914

GENERAL INFORMATION

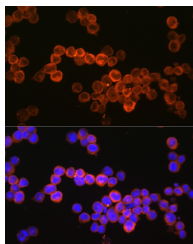
| | |
|--------------------------|--------------------|
| Product Type | Primary antibodies |
| Short Description | |
| Applications | WB/IF/ICC/ELISA |
| Host/Source | Rabbit |
| Reactivity | Human/Mouse/Rat |

PRODUCT PROPERTIES

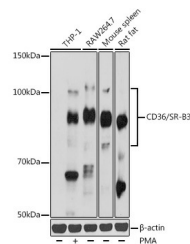
| | |
|-----------------------|---|
| Clonality | Polyclonal |
| Clone ID | |
| Concentration | Lot specific |
| Conjugation | Unconjugated |
| Purification | Affinity purification |
| Dilution Range | WB:1:500-1:1000 IF/ICC:1:50-1:200 ELISA:Recommended starting concentration is 1 Mu g/mL. Please optimize the concentration based on your specific assay requirements. |
| Formulation | PBS with 0.01% Thimerosal, 50% Glycerol, pH 7.3. |
| Isotype | IgG |
| Storage | Store at -20°C for up to 1 year from the date of receipt, and avoid repeat freeze-thaw cycles. |
| Instruction | |

TARGET INFORMATION

| | |
|---------------------------|---|
| Gene ID | 948 |
| Gene Symbol | CD36 |
| Uniprot ID | CD36_HUMAN |
| Immunogen | |
| Immunogen Region | 50-150 |
| Specificity | A synthetic peptide corresponding to a sequence within amino acids 50-150 of human CD36/SR-B3 (NP_000063.2). AFKNWVKTGTEVYRQFWFD VQNPQEVMMNSSNIQVKQRG PYTYRVRFLLAKENVTQDAED NTVSFLQPNGAIFEPSLSVG |
| Immunogen Sequence | TEADNFTVLNLAVAASHIY Q |



Immunofluorescence analysis of U937 cells using CD36/SR-B3 Rabbit polyclonal antibody (STJ116914) at dilution of 1:100 (40x lens). Secondary antibody: Cy3 Goat Anti-Rabbit IgG (H+L) at 1:500 dilution. Blue: DAPI for nuclear staining.



Western blot analysis of various lysates using CD36/SR-B3 Rabbit polyclonal antibody (STJ116914) at 1:1000 dilution. THP-1 cells were treated by PMA (80 nM) at 37 °C for overnight. Secondary antibody: HRP Goat Anti-Rabbit IgG (H+L) (STJS000856) at 1:10000 dilution. Lysates/proteins: 25 Mu g per lane. Blocking buffer: 3% nonfat dry milk in TBST. Detection: ECL Basic Kit. Exposure time: 180s.