

Anti-CBFA2T3 antibody (593-653) (STJ116912)

STJ116912

GENERAL INFORMATION

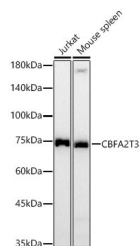
Product Type	Primary antibodies
Short Description	
Applications	WB/ELISA
Host/Source	Rabbit
Reactivity	Human/Mouse/Rat

PRODUCT PROPERTIES

Clonality	Polyclonal
Clone ID	
Concentration	Lot specific
Conjugation	Unconjugated
Purification	Affinity purification
Dilution Range	WB:1:500-1:1000 ELISA:Recommended starting concentration is 1 µg/mL. Please optimize the concentration based on your specific assay requirements.
Formulation	PBS with 0.05% Proclin300, 50% Glycerol, pH 7.3.
Isotype	IgG
Storage Instruction	Store at -20°C for up to 1 year from the date of receipt, and avoid repeat freeze-thaw cycles.

TARGET INFORMATION

Gene ID	863
Gene Symbol	CBFA2T3
Uniprot ID	MTG16_HUMAN
Immunogen	
Immunogen Region	593-653
Specificity	Recombinant fusion protein containing a sequence corresponding to amino acids 593-653 of human CBFA2T3 (NP_005178.4).
Immunogen Sequence	GQSLQGPTAVVADPVPGPPE AAHSLGPSLPVGAASPSEAG SAGPSRPGSPSPGGLDTVP R



Western blot analysis of various lysates using CBFA2T3 Rabbit polyclonal antibody (STJ116912) at 1:900 dilution. Secondary antibody:HRP Goat Anti-Rabbit IgG (H+L) (STJS000856) at 1:10000 dilution. Lysates/proteins: 25 µg per lane. Blocking buffer: 3 % nonfat dry milk in TBST. Detection:ECL Basic Kit. Exposure time: 90s.

This product is suitable for in-vitro studies under the RESEARCH USE ONLY [RUO] licence. This product must not be used as for diagnostic or other medical purposes.
St John's Laboratory Ltd, Knowledge Dock Business Centre, University Way, London, E16 2RD | Tel: 0208 223 3081