

**Anti-ALOX12 antibody (483-663) (STJ116903)**  
STJ116903

**GENERAL INFORMATION**

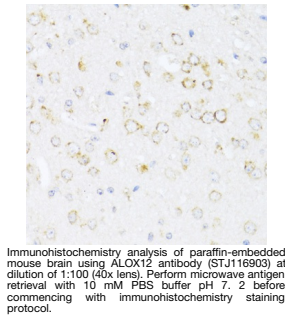
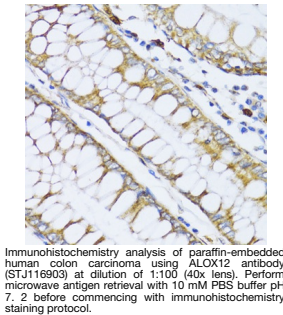
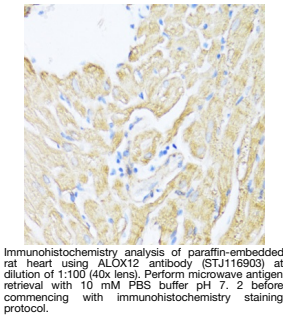
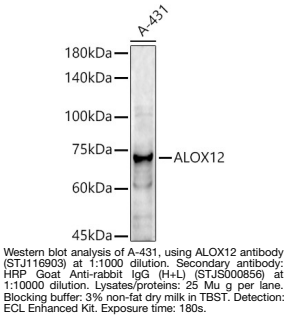
|                          |                       |
|--------------------------|-----------------------|
| <b>Product Type</b>      | Primary antibodies    |
| <b>Short Description</b> |                       |
| <b>Applications</b>      | WB/IHC-P/IF/ICC/ELISA |
| <b>Host/Source</b>       | Rabbit                |
| <b>Reactivity</b>        | Human/Mouse/Rat       |

**PRODUCT PROPERTIES**

|                      |   |
|----------------------|---|
| <b>Clonality</b>     | Polyclonal  |
| <b>Clone ID</b>      |   |
| <b>Concentration</b> | Lot specific  |
| <b>Conjugation</b>   | Unconjugated  |
| <b>Purification</b>  | Affinity purification   |
| <b>Dilution</b>      | WB:1:500-1:1000   |
| <b>Range</b>         | IHC-P:1:50-1:200<br>IF:1:50-1:200<br>ELISA:Recommended starting concentration is 1 $\mu$ g/mL. Please optimize the concentration based on your specific assay requirements. |
| <b>Formulation</b>   | PBS with 0.05% Proclin300, 50% Glycerol, pH 7.3.  |
| <b>Isotype</b>       | IgG   |
| <b>Storage</b>       | Store at -20°C for up to 1 year from the date of receipt, and avoid repeat freeze-thaw cycles.  |
| <b>Instruction</b>   |   |

**TARGET INFORMATION**

|                           |  |
|---------------------------|--|
| <b>Gene ID</b>            | 239  |
| <b>Gene Symbol</b>        | ALOX12   |
| <b>Uniprot ID</b>         | LOX12_HUMAN  |
| <b>Immunogen</b>          |  |
| <b>Immunogen Region</b>   | 483-663  |
| <b>Specificity</b>        | Recombinant fusion protein containing a sequence corresponding to amino acids 483-663 of human ALOX12 (NP_000688.2).   |
| <b>Immunogen Sequence</b> | YQRDDIVKGDPELQAWCREI TEVGLCQAQDRGFPVSFQSQ SQLCHFLTMCVFTCTAQHAA INQGQLDWYAWVPNAPCTMR<br>MPPPTTKEDVTMATVMGSLP DVRQACLQMAISWHLRRRQP DMVPLGHHKEKYFSGPKPKA VLNQFRDLEKLEKEITARN<br>EQLDWPYEYLPKPSCIENSVT I |



This product is suitable for in-vitro studies under the RESEARCH USE ONLY [RUO] licence. This product must not be used as for diagnostic or other medical purposes.  
St John's Laboratory Ltd, Knowledge Dock Business Centre, University Way, London, E16 2RD | Tel: 0208 223 3081