

Anti-ALDH3B2 antibody (296-385) (STJ116902)

STJ116902

GENERAL INFORMATION

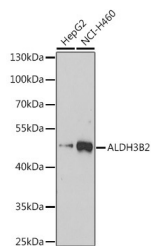
Product Type	Primary antibodies
Short Description	
Applications	WB/ELISA
Host/Source	Rabbit
Reactivity	Human/Rat

PRODUCT PROPERTIES

Clonality	Polyclonal
Clone ID	
Concentration	Lot specific
Conjugation	Unconjugated
Purification	Affinity purification
Dilution Range	WB:1:1000-1:5000 ELISA:Recommended starting concentration is 1 μ g/mL. Please optimize the concentration based on your specific assay requirements.
Formulation	PBS with 0.01% Thimerosal, 50% Glycerol, pH 7.3.
Isotype	IgG
Storage Instruction	Store at -20°C for up to 1 year from the date of receipt, and avoid repeat freeze-thaw cycles.

TARGET INFORMATION

Gene ID	
Gene Symbol	ALDH3B2
Uniprot ID	AL3B2_HUMAN
Immunogen	
Immunogen Region	296-385
Specificity	Recombinant fusion protein containing a sequence corresponding to amino acids 296-385 of human ALDH3B2 (NP_000686.2).
Immunogen Sequence	MLERTSSGSFGNEGFTYIS LLSVPFGGVGHSGMGRYHGK FTFDTFSHHRTCLLAPSGLE KLKEIHPPYTDWNQQLLRW GMGSQSCTLL



Western blot analysis of extracts of various cell lines, using ALDH3B2 antibody (STJ116902) at 1:3000 dilution. Secondary antibody: HRP Goat Anti-rabbit IgG (H+L) at 1:10000 dilution. Lysates/proteins: 25ug per lane. Blocking buffer: 3% nonfat dry milk in TBST. Detection: ECL Basic Kit. Exposure time: 90s.

This product is suitable for in-vitro studies under the RESEARCH USE ONLY [RUO] licence. This product must not be used as for diagnostic or other medical purposes.
St John's Laboratory Ltd, Knowledge Dock Business Centre, University Way, London, E16 2RD | Tel: 0208 223 3081