

Anti-KDM7A antibody (100-940) (STJ116893)

STJ116893

GENERAL INFORMATION

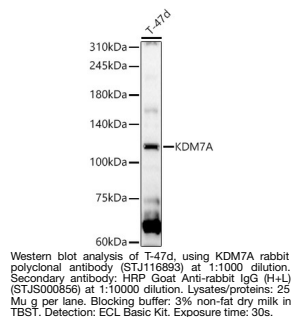
Product Type	Primary antibodies
Short Description	
Applications	WB/ELISA
Host/Source	Rabbit
Reactivity	Human

PRODUCT PROPERTIES

Clonality	Polyclonal
Clone ID	
Concentration	Lot specific
Conjugation	Unconjugated
Purification	Affinity purification
Dilution Range	WB:1:500-1:1000 ELISA:Recommended starting concentration is 1 Mu g/mL. Please optimize the concentration based on your specific assay requirements.
Formulation	PBS with 0.02% Sodium Azide, 50% Glycerol, pH 7.3.
Isotype	IgG
Storage	Store at -20°C for up to 1 year from the date of receipt, and avoid repeat freeze-thaw cycles.
Instruction	

TARGET INFORMATION

Gene ID	338523
Gene Symbol	Kdm7a
Uniprot ID	KDM7A_MOUSE
Immunogen	
Immunogen Region	100-940
Specificity	Recombinant fusion protein containing a sequence corresponding to amino acids 100-200 of mouse KDM7A (NP_001028602.2).
Immunogen Sequence	WHRHDYTEVDDGSKPVQAGT RAFVKELRSRVFSPADEIIV KMHGSQLTQRYLEKHGFDVP IMVPKLLDLGLRLPSAFSV MDVERYVGGDKVIDVIDVAR Q



This product is suitable for in-vitro studies under the RESEARCH USE ONLY [RUO] licence. This product must not be used as for diagnostic or other medical purposes.
St John's Laboratory Ltd, Knowledge Dock Business Centre, University Way, London, E16 2RD | Tel: 0208 223 3081