

Anti-RBM12 antibody (C-Term) (STJ116885)

STJ116885

GENERAL INFORMATION

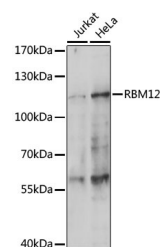
Product Type	Primary antibodies
Short Description	
Applications	WB/ELISA
Host/Source	Rabbit
Reactivity	Human

PRODUCT PROPERTIES

Clonality	Polyclonal
Clone ID	
Concentration	Lot specific
Conjugation	Unconjugated
Purification	Affinity purification
Dilution Range	WB:1:500-1:2000
	ELISA: Recommended starting concentration is 1 µg/mL. Please optimize the concentration based on your specific assay requirements.
Formulation	PBS with 0.01% Thimerosal, 50% Glycerol, pH 7.3.
Isotype	IgG
Storage Instruction	Store at -20°C for up to 1 year from the date of receipt, and avoid repeat freeze-thaw cycles.

TARGET INFORMATION

Gene ID	10137
Gene Symbol	RBM12
Uniprot ID	RBM12_HUMAN
Immunogen	
Immunogen Region	C-Term
Specificity	A synthetic peptide corresponding to a sequence within amino acids 800 to the C-terminus of human RBM12 (NP_001185767.1).
Immunogen Sequence	GGPPGFGSGPPGLGSAPGHL GGPPAFGPGPGPGPIH IGGPPGFASSGKPGPTVIK VQNMPFTVSIIDFFYGY QVIGPSVCLKYNEKGMPTGE AMVAFESRDEATAAVIDLND RPIGSRKVKLVLG



Western blot analysis of various lysates using RBM12 Rabbit polyclonal antibody (STJ116885) at 1:1000 dilution. Secondary antibody: HRP Goat Anti-Rabbit IgG (H+L) (STJS000856) at 1:10000 dilution. Lysates/proteins: 25 µg per lane. Blocking buffer: 3% nonfat dry milk in TBST. Detection: ECL Enhanced Kit. Exposure time: 180s.

This product is suitable for in-vitro studies under the RESEARCH USE ONLY [RUO] licence. This product must not be used as for diagnostic or other medical purposes.
St John's Laboratory Ltd, Knowledge Dock Business Centre, University Way, London, E16 2RD | Tel: 0208 223 3081