

Anti-IL6ST antibody (678-857) (STJ116862)

STJ116862

GENERAL INFORMATION

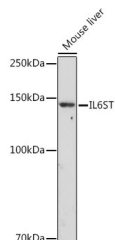
Product Type	Primary antibodies
Short Description	
Applications	WB/IHC-P/ELISA
Host/Source	Rabbit
Reactivity	Human/Mouse/Rat

PRODUCT PROPERTIES

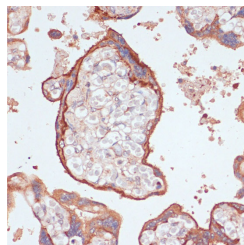
Clonality	Polyclonal
Clone ID	
Concentration	Lot specific
Conjugation	Unconjugated
Purification	Affinity purification
Dilution	WB:1:500-1:2000
Range	IHC-P:1:50-1:100 ELISA:Recommended starting concentration is 1 μ g/mL. Please optimize the concentration based on your specific assay requirements.
Formulation	PBS with 0.09% Sodium Azide, 50% Glycerol, pH 7.3.
Isotype	IgG
Storage Instruction	Store at -20°C for up to 1 year from the date of receipt, and avoid repeat freeze-thaw cycles.

TARGET INFORMATION

Gene ID	3572
Gene Symbol	IL6ST
Uniprot ID	IL6RB_HUMAN
Immunogen	
Immunogen Region	678-857
Specificity	Recombinant fusion protein containing a sequence corresponding to amino acids 678-857 of human IL6ST (NP_001177910.1).
Immunogen Sequence	PSISSDENESSQNTSSTVQ YSTVVHSGYRHQVPSVQVFS RSESTQPLLDSEERPDLQL VDHVDGGDGILPRQQYFKQN CSQHESPDISHFERSKQVS SVNEDFVRLKQKQISDHISQ SCGSGQMCMFQEVSAADAFG PGTEGQVERFETVGMEAATD EGMPKSYLPQTVRQGGYMPQ



Western blot analysis of extracts of mouse liver, using IL6ST rabbit polyclonal antibody (STJ116862) at 1:1000 dilution. Secondary antibody: HRP Goat Anti-rabbit IgG (H+L) at 1:10000 dilution. Lysates/proteins: 25 μ g per lane. Blocking buffer: 3% nonfat dry milk in TBST. Detection: ECL Enhanced Kit. Exposure time: 180s.



Immunohistochemistry of paraffin-embedded human placenta using IL6ST antibody (STJ116862) at dilution of 1:100 (40x lens).

This product is suitable for in-vitro studies under the RESEARCH USE ONLY [RUO] licence. This product must not be used as for diagnostic or other medical purposes.
St John's Laboratory Ltd, Knowledge Dock Business Centre, University Way, London, E16 2RD | Tel: 0208 223 3081