

Anti-TLR9 antibody (414-543) (STJ116849)

STJ116849

GENERAL INFORMATION

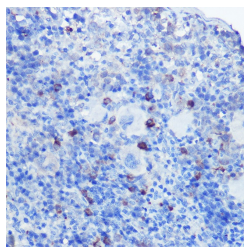
Product Type	Primary antibodies
Short Description	
Applications	WB/IHC-P/ELISA
Host/Source	Rabbit
Reactivity	Human/Mouse/Rat

PRODUCT PROPERTIES

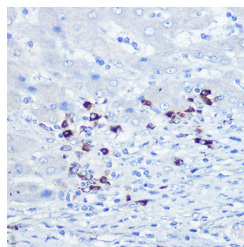
Clonality	Polyclonal
Clone ID	
Concentration	Lot specific
Conjugation	Unconjugated
Purification	Affinity purification
Dilution Range	WB:1:500-1:1000 IHC-P:1:50-1:200 ELISA:Recommended starting concentration is 1 Mu g/mL. Please optimize the concentration based on your specific assay requirements.
Formulation	PBS with 0.05% Proclin300, 50% Glycerol, pH 7.3.
Isotype	IgG
Storage Instruction	Store at -20°C for up to 1 year from the date of receipt, and avoid repeat freeze-thaw cycles.

TARGET INFORMATION

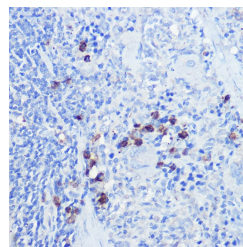
Gene ID	54106
Gene Symbol	TLR9
Uniprot ID	TLR9_HUMAN
Immunogen	
Immunogen Region	414-543
Specificity	A synthetic peptide corresponding to a sequence within amino acids 414-543 of human TLR9 (NP_059138.1).
Immunogen Sequence	FPGLRYVDLSDNRISGASEL TATMGEADGGKVVWLQPGDL APAPVDTPPSSEDFRPNCSTL NFTLDLSRNNLVTVQPEMFA QLSHLQCLRLSHNCISQAVN GSQFLPLTGLQVLDLSHNKL DLYEHSFTE



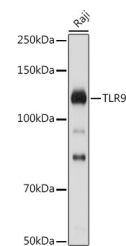
Immunohistochemistry analysis of paraffin-embedded mouse spleen using TLR9 Rabbit polyclonal antibody (STJ116849) at dilution of 1:100 (40x lens). Perform high pressure antigen retrieval with 10 mM citrate buffer pH 6.0 before commencing with immunohistochemistry staining protocol.



Immunohistochemistry analysis of paraffin-embedded human liver using TLR9 Rabbit polyclonal antibody (STJ116849) at dilution of 1:100 (40x lens). Perform high pressure antigen retrieval with 10 mM citrate buffer pH 6.0 before commencing with immunohistochemistry staining protocol.



Immunohistochemistry analysis of paraffin-embedded rat spleen using TLR9 Rabbit polyclonal antibody (STJ116849) at dilution of 1:100 (40x lens). Perform high pressure antigen retrieval with 10 mM citrate buffer pH 6.0 before commencing with immunohistochemistry staining protocol.



Western blot analysis of extracts of Raji cells, using TLR9 antibody (STJ116849) at 1:1000 dilution. Secondary antibody: HRP Goat Anti-Rabbit IgG (H+L) (STJS000856) at 1:10000 dilution. Lysates/proteins: 25 Mu g per lane. Blocking buffer: 3% nonfat dry milk in TBST. Detection: ECL Basic Kit. Exposure time: 90s.

This product is suitable for in-vitro studies under the RESEARCH USE ONLY [RUO] licence. This product must not be used as for diagnostic or other medical purposes.
St John's Laboratory Ltd, Knowledge Dock Business Centre, University Way, London, E16 2RD | Tel: 0208 223 3081