

Anti-GDNF antibody (109-211) (STJ116846)

STJ116846

GENERAL INFORMATION

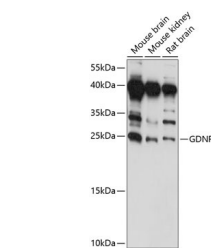
Product Type	Primary antibodies
Short Description	
Applications	WB/IF/ICC/ELISA
Host/Source	Rabbit
Reactivity	Human/Mouse/Rat

PRODUCT PROPERTIES

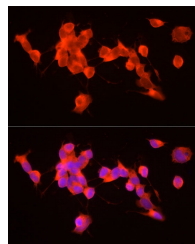
Clonality	Polyclonal
Clone ID	
Concentration	Lot specific
Conjugation	Unconjugated
Purification	Affinity purification
Dilution Range	WB:1:500-1:2000 IF/ICC:1:50-1:200 ELISA:Recommended starting concentration is 1 Mu g/mL. Please optimize the concentration based on your specific assay requirements.
Formulation	PBS with 0.01% Thimerosal, 50% Glycerol, pH 7.3.
Isotype	IgG
Storage	Store at -20°C for up to 1 year from the date of receipt, and avoid repeat freeze-thaw cycles.
Instruction	

TARGET INFORMATION

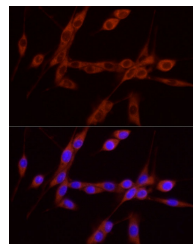
Gene ID	2668
Gene Symbol	GDNF
Uniprot ID	GDNF_HUMAN
Immunogen	
Immunogen Region	109-211
Specificity	Recombinant fusion protein containing a sequence corresponding to amino acids 109-211 of human GDNF (NP_000505.1). RGQRGKNRGCVLTAIHLNVT DLGLGYETKEELIFRYCSGS CDAAETTYDKILKNLSRNR LVSDKVGQACCRPIAFDDDL
Immunogen Sequence	SFLDDNLVYHILRKHSKRRC GCI



Western blot analysis of extracts of various cell lines, using GDNF antibody (STJ116846) at 1:1000 dilution. Secondary antibody: HRP Goat Anti-rabbit IgG (H+L) (STJ000856) at 1:10000 dilution. Lysates/proteins: 25 Mu g per lane. Blocking buffer: 3% non-fat dry milk in TBST. Detection: ECL Basic Kit. Exposure time: 60s.



Immunofluorescence analysis of SH-SY5Y cells using GDNF rabbit polyclonal antibody (STJ116846) at dilution of 1:100 (40x lens). Blue: DAPI for nuclear staining.



Immunofluorescence analysis of U-87MG cells using GDNF rabbit polyclonal antibody (STJ116846) at dilution of 1:100 (40x lens). Blue: DAPI for nuclear staining.