

Anti-HIGD1A antibody (1-93) (STJ116792)

STJ116792

GENERAL INFORMATION

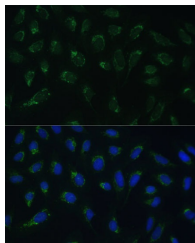
Product Type	Primary antibodies
Short Description	
Applications	WB/IHC-P/IF/ICC/ELISA
Host/Source	Rabbit
Reactivity	Human

PRODUCT PROPERTIES

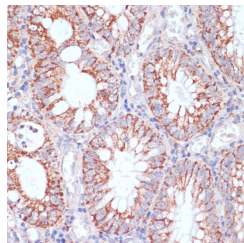
Clonality	Polyclonal
Clone ID	
Concentration	Lot specific
Conjugation	Unconjugated
Purification	Affinity purification
Dilution Range	WB:1:500-1:2000 IHC-P:1:50-1:100 IF/ICC:1:50-1:100 ELISA:Recommended starting concentration is 1 Mu g/mL. Please optimize the concentration based on your specific assay requirements.
Formulation	PBS with 0.01% Thimerosal, 50% Glycerol, pH 7.3.
Isotype	IgG
Storage Instruction	Store at -20°C for up to 1 year from the date of receipt, and avoid repeat freeze-thaw cycles.

TARGET INFORMATION

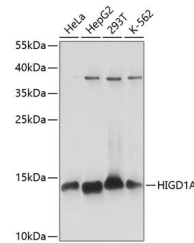
Gene ID	25994
Gene Symbol	HIGD1A
Uniprot ID	HIG1A_HUMAN
Immunogen	
Immunogen Region	1-93
Specificity	A synthetic peptide corresponding to a sequence within amino acids 1-93 of human HIGD1A (NP_054775.2).
Immunogen Sequence	MSTDGTGVSPLPSYEEDQGSKL IRKAKEAPFVPVGIAGFAAI VAYGLYKLKSRGNTKMSIHL IHMRVAAQGFVVGAMTVGMG YSMYREFWAKPKP



Immunofluorescence analysis of U-2 OS cells using HIGD1A Rabbit polyclonal antibody (STJ116792) at dilution of 1:100 (40x lens). Secondary antibody: Cy3 Goat Anti-Rabbit IgG (H+L) at 1:500 dilution. Blue: DAPI for nuclear staining.



Immunohistochemistry analysis of HIGD1A in paraffin-embedded human colon carcinoma using HIGD1A Rabbit polyclonal antibody (STJ116792) at dilution of 1:100 (40x lens). Perform microwave antigen retrieval with 10 mM PBS buffer pH 7.2 before commencing with immunohistochemistry staining protocol.



Western blot analysis of various lysates using HIGD1A Rabbit polyclonal antibody (STJ116792) at 1:1000 dilution. Secondary antibody: HRP Goat Anti-Rabbit IgG (H+L) (STJ/S000856) at 1:10000 dilution. Lysates/proteins: 25 Mu g per lane. Blocking buffer: 3% nonfat dry milk in TBST. Detection: ECL Basic Kit. Exposure time: 1s.

This product is suitable for in-vitro studies under the RESEARCH USE ONLY [RUO] licence. This product must not be used as for diagnostic or other medical purposes.
St John's Laboratory Ltd, Knowledge Dock Business Centre, University Way, London, E16 2RD | Tel: 0208 223 3081