

Anti-ASH2L antibody (81-280) (STJ116754)

STJ116754

GENERAL INFORMATION

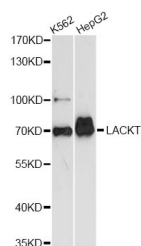
Product Type	Primary antibodies
Short Description	
Applications	WB/ELISA
Host/Source	Rabbit
Reactivity	Human

PRODUCT PROPERTIES

Clonality	Polyclonal
Clone ID	
Concentration	Lot specific
Conjugation	Unconjugated
Purification	Affinity purification
Dilution	WB:1:500-1:2000
Range	ELISA:Recommended starting concentration is 1 Mu g/mL. Please optimize the concentration based on your specific assay requirements.
Formulation	PBS with 0.01% Thimerosal, 50% Glycerol, pH 7.3.
Isotype	IgG
Storage	Store at -20°C for up to 1 year from the date of receipt, and avoid repeat freeze-thaw cycles.
Instruction	

TARGET INFORMATION

Gene ID	9070
Gene Symbol	ASH2L
Uniprot ID	ASH2L_HUMAN
Immunogen	
Immunogen Region	81-280
Specificity	Recombinant fusion protein containing a sequence corresponding to amino acids 81-280 of human ASH2L (NP_001098684.1).
Immunogen Sequence	NLTWQSRTQDEHPKTMFSKD KDIIFFIDKYWECMTTRQRP GKMTWPNNVKTMSKERVDF LVKEHPDPGSKDPEEDYPKF GLLDQDLSNIGPAYDNQKQS SAVSTSGNLNGGIAAGSSGK GRGAKRKQDGGTTGTTKKA RSDPLFSAQRLPPHGYPLEH PFNKDGYRYLAEPDPHAPD PEKLELDCWAGKPIPGDLRYR



Western blot analysis of extracts of various cell lines, using ASH2L antibody (STJ116754) at 1:3000 dilution. Secondary antibody: HRP Goat Anti-rabbit IgG (H+L) at 1:10000 dilution. Lysates/proteins: 25ug per lane. Blocking buffer: 3% nonfat dry milk in TBST. Detection: ECL Basic Kit. Exposure time: 90s.

This product is suitable for in-vitro studies under the RESEARCH USE ONLY [RUO] licence. This product must not be used as for diagnostic or other medical purposes.
St John's Laboratory Ltd, Knowledge Dock Business Centre, University Way, London, E16 2RD | Tel: 0208 223 3081