

Anti-SNCG antibody (50-127) (STJ116703)

STJ116703

GENERAL INFORMATION

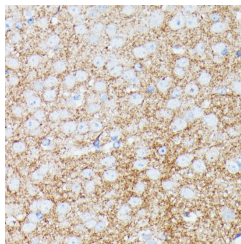
Product Type	Primary antibodies
Short Description	
Applications	WB/IHC-P/ELISA
Host/Source	Rabbit
Reactivity	Human/Mouse

PRODUCT PROPERTIES

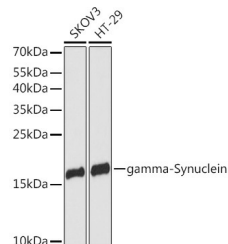
Clonality	Polyclonal
Clone ID	
Concentration	Lot specific
Conjugation	Unconjugated
Purification	Affinity purification
Dilution Range	WB:1:500-1:2000 IHC-P:1:50-1:200 ELISA:Recommended starting concentration is 1 Mu g/mL. Please optimize the concentration based on your specific assay requirements.
Formulation	PBS with 0.01% Thimerosal, 50% Glycerol, pH 7.3.
Isotype	IgG
Storage Instruction	Store at -20°C for up to 1 year from the date of receipt, and avoid repeat freeze-thaw cycles.

TARGET INFORMATION

Gene ID	6623
Gene Symbol	SNCG
Uniprot ID	SYUG_HUMAN
Immunogen	
Immunogen Region	50-127
Specificity	A synthetic peptide corresponding to a sequence within amino acids 50-127 of human gamma-Synuclein (NP_003078.2). QSVTSVAEKTKEQANAVSEA VVSSVNTVATKTVEEAENIA VTSGVVRKEDLRPSAPQQEG EASKEKEEVAEEAQSGGD
Immunogen Sequence	



Immunohistochemistry analysis of gamma-Synuclein in paraffin-embedded mouse brain using gamma-Synuclein Rabbit polyclonal antibody (STJ116703) at dilution of 1:100 (40x lens). Perform microwave antigen retrieval with 10 mM PBS buffer pH 7.2 before commencing with immunohistochemistry staining protocol.



Western blot analysis of various lysates using gamma-Synuclein Rabbit polyclonal antibody (STJ116703) at 1:3000 dilution. Secondary antibody: HRP Goat Anti-Rabbit IgG (H+L) (STJS000856) at 1:10000 dilution. Lysates/proteins: 25 Mu g per lane. Blocking buffer: 3% nonfat dry milk in TBST. Detection: ECL Basic Kit. Exposure time: 90s.

This product is suitable for in-vitro studies under the RESEARCH USE ONLY [RUO] licence. This product must not be used as for diagnostic or other medical purposes.
St John's Laboratory Ltd, Knowledge Dock Business Centre, University Way, London, E16 2RD | Tel: 0208 223 3081