

Anti-UBQLNL antibody (176-475) (STJ116661)
STJ116661

GENERAL INFORMATION

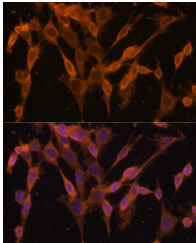
Product Type	Primary antibodies
Short Description	
Applications	WB/IF/ICC/ELISA
Host/Source	Rabbit
Reactivity	Human/Mouse/Rat

PRODUCT PROPERTIES

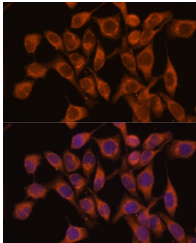
Clonality	Polyclonal
Clone ID	
Concentration	Lot specific
Conjugation	Unconjugated
Purification	Affinity purification
Dilution Range	WB: 1:500-1:2000 IF/CC: 1:50-1:200
	ELISA: Recommended starting concentration is 1 μ g/mL. Please optimize the concentration based on your specific assay requirements.
Formulation	PBS with 0.01% Thimerosal, 50% Glycerol, pH 7.3.
Isotype	IgG
Storage Instruction	Store at -20°C for up to 1 year from the date of receipt, and avoid repeat freeze-thaw cycles.

TARGET INFORMATION

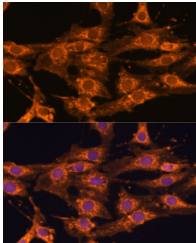
Gene ID	143630
Gene Symbol	UBQLNL
Uniprot ID	UBQLN_HUMAN
Immunogen Region	176-475
Specificity	Recombinant fusion protein containing a sequence corresponding to amino acids 176-475 of human UBQLNL (NP_659490.4).
Immunogen Sequence	LENPSIQRLLSNMEFMWQFI SEHLDTQQLMQQNPEVSRL LDNSEILLQTLELARNLAMI QEIMQIQPSQNLEYPLNPQ PYLGLETMPGGNNALGQNYA DINDQMLNSMQDPFGGNPFT ALLAGQVLEQVQSPPPPPP SSEQDQLTQHPATRVYNS SGGFSNSTSANDTLNKNVHT SKANTAMISTKGQSHICATR QPAWIPALPSIELTQQLQEE YKDATVSLSSSRQTLKGD



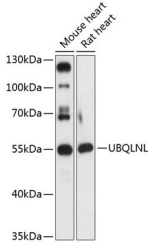
Immunofluorescence analysis of NIH/3T3 cells using UBQLNL Rabbit polyclonal antibody (STJ116661) at dilution of 1:100. Secondary antibody: Cy3 Goat Anti-Rabbit IgG (H+L) at 1:500 dilution. Blue: DAPI for nuclear staining.



Immunofluorescence analysis of HeLa cells using UBQLNL Rabbit polyclonal antibody (STJ116661) at dilution of 1:100. Secondary antibody: Cy3 Goat Anti-Rabbit IgG (H+L) at 1:500 dilution. Blue: DAPI for nuclear staining.



Immunofluorescence analysis of C6 cells using UBQLNL Rabbit polyclonal antibody (STJ116661) at dilution of 1:100. Secondary antibody: Cy3 Goat Anti-Rabbit IgG (H+L) at 1:500 dilution. Blue: DAPI for nuclear staining.



Western blot analysis of various lysates using UBQLNL Rabbit polyclonal antibody (STJ116661) at 1:3000 dilution. Secondary antibody: HRP Goat Anti-Rabbit IgG (H+L) (STJ500856) at 1:10000 dilution. Lysates/proteins: 25 μ g per lane. Blocking buffer: 3% nonfat dry milk in TBST. Detection: ECL Basic Kit. Exposure time: 30s.

This product is suitable for in-vitro studies under the RESEARCH USE ONLY [RUO] licence. This product must not be used as for diagnostic or other medical purposes.
St John's Laboratory Ltd, Knowledge Dock Business Centre, University Way, London, E16 2RD | Tel: 0208 223 3081