

Anti-PPM1M antibody (213-459) (STJ116656)

STJ116656

GENERAL INFORMATION

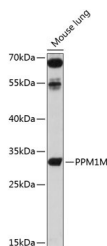
| | |
|--------------------------|--------------------|
| Product Type | Primary antibodies |
| Short Description | |
| Applications | WB/ELISA |
| Host/Source | Rabbit |
| Reactivity | Human/Mouse |

PRODUCT PROPERTIES

| | |
|----------------------|--|
| Clonality | Polyclonal |
| Clone ID | |
| Concentration | Lot specific |
| Conjugation | Unconjugated |
| Purification | Affinity purification |
| Dilution | WB: 1:500-1:2000 |
| Range | ELISA: Recommended starting concentration is 1 µg/mL. Please optimize the concentration based on your specific assay requirements. |
| Formulation | PBS with 0.02% Sodium Azide, 50% Glycerol, pH 7.3. |
| Isotype | IgG |
| Storage | Store at -20°C for up to 1 year from the date of receipt, and avoid repeat freeze-thaw cycles. |
| Instruction | |

TARGET INFORMATION

| | |
|---------------------------|--|
| Gene ID | 132160 |
| Gene Symbol | PPM1M |
| Uniprot ID | PPM1M_HUMAN |
| Immunogen | |
| Immunogen Region | 213-459 |
| Specificity | Recombinant fusion protein containing a sequence corresponding to amino acids 213-459 of human PPM1M (NP_653242.3). |
| Immunogen Sequence | MGGCTALVAVSLQGKLYMAN AGDSRAILVRRDEIRPLSFE FTPETERQRIQQLAFVYPEL LAGEFTRLEFPRLKGDDLQ QKVLFRDHHMSGWSYKRVEK SDLYPLIHGQGRQARLLGT LAVSRGLGDHQLRVLDNTNIQ LKPFLLSVQVTVLDVDQLE LQEDDVVVMATDGLWDVLSN EQVAWLVRSLPGNQEDPHR FSKLAQMLIHSTQGKEDSLT EEGQVSYDDVSFVIPLHS |



Western blot analysis of extracts of mouse testis, using PPM1M antibody (STJ116656) at 1:3000 dilution. Secondary antibody: HRP Goat Anti-rabbit IgG (H+L) at 1:10000 dilution. Lysates/proteins: 25 µg per lane. Blocking buffer: 3% nonfat dry milk in TBST. Detection: ECL Basic Kit. Exposure time: 90s.

This product is suitable for in-vitro studies under the RESEARCH USE ONLY [RUO] licence. This product must not be used as for diagnostic or other medical purposes.
St John's Laboratory Ltd, Knowledge Dock Business Centre, University Way, London, E16 2RD | Tel: 0208 223 3081