

Anti-MIOX antibody (1-285) (STJ116619)

STJ116619

GENERAL INFORMATION

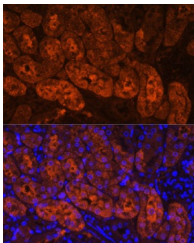
Product Type	Primary antibodies
Short Description	
Applications	WB/IF/ICC/ELISA
Host/Source	Rabbit
Reactivity	Mouse/Rat

PRODUCT PROPERTIES

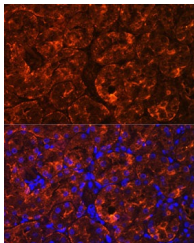
Clonality	Polyclonal
Clone ID	
Concentration	Lot specific
Conjugation	Unconjugated
Purification	Affinity purification
Dilution	WB: 1:500-1:2000
Range	IF/ICC: 1:50-1:200 ELISA: Recommended starting concentration is 1 µg/mL. Please optimize the concentration based on your specific assay requirements.
Formulation	PBS with 0.01% Thimerosal, 50% Glycerol, pH 7.3.
Isotype	IgG
Storage Instruction	Store at -20°C for up to 1 year from the date of receipt, and avoid repeat freeze-thaw cycles.

TARGET INFORMATION

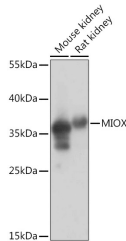
Gene ID	55586
Gene Symbol	MIOX
Uniprot ID	MIOX_HUMAN
Immunogen	
Immunogen Region	1-285
Specificity	Recombinant fusion protein containing a sequence corresponding to amino acids 1-285 of human MIOX (NP_060054.4).
Immunogen Sequence	MKVTVGPDPSLVYRPDVDP VAKDKASFRNYTSGPLLD RV FTTYKLMHTHTQTVDFVRSKH AQFGGFSYKKMTVMEAVDLL DGLVDES DDPDVDFPNSFHAF QTAEGIRKAHPDKDWFHLVG LLHDLGKVLALFGEPQWAVV GDTFPVGCRPQASVFC DST FQDNPDLDQPRYSTELGMYQ PHCGLDRVLSWGHDEYMYQ VMKFNKFSLPPEAFYMIRFH SFYPWHTGRDYQQLCSQQD



Immunofluorescence analysis of paraffin-embedded mouse kidney using MIOX Rabbit polyclonal antibody (STJ116619) at dilution of 1:100. Secondary antibody: Cy3 Goat Anti-Rabbit IgG (H+L) at 1:500 dilution. Blue: DAPI for nuclear staining.



Immunofluorescence analysis of paraffin-embedded rat kidney using MIOX Rabbit polyclonal antibody (STJ116619) at dilution of 1:100. Secondary antibody: Cy3 Goat Anti-Rabbit IgG (H+L) at 1:500 dilution. Blue: DAPI for nuclear staining.



Western blot analysis of various lysates using MIOX Rabbit polyclonal antibody (STJ116619) at 1:1000 dilution. Secondary antibody: HRP Goat Anti-Rabbit IgG (H+L) (STJ500856) at 1:10000 dilution. Lysates/proteins: 25 µg per lane. Blocking buffer: 3% nonfat dry milk in TBST. Detection: ECL Basic Kit. Exposure time: 15s.

This product is suitable for in-vitro studies under the RESEARCH USE ONLY [RUO] licence. This product must not be used as for diagnostic or other medical purposes.
St John's Laboratory Ltd, Knowledge Dock Business Centre, University Way, London, E16 2RD | Tel: 0208 223 3081