

Anti-LAIR2 antibody (22-120) (STJ116588)
STJ116588

GENERAL INFORMATION

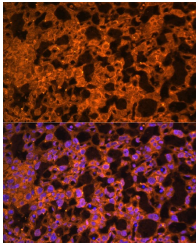
Product Type	Primary antibodies
Short Description	
Applications	WB/IF/ICC/ELISA
Host/Source	Rabbit
Reactivity	Human/Mouse/Rat

PRODUCT PROPERTIES

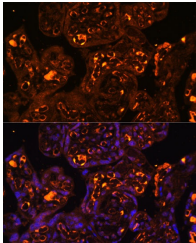
Clonality	Polyclonal
Clone ID	
Concentration	Lot specific
Conjugation	Unconjugated
Purification	Affinity purification
Dilution Range	WB:1:500-1:2000 IF/ICC:1:50-1:200 ELISA:Recommended starting concentration is 1 μ g/mL. Please optimize the concentration based on your specific assay requirements.
Formulation	PBS with 0.01% Thimerosal, 50% Glycerol, pH 7.3.
Isotype	IgG
Storage Instruction	Store at -20°C for up to 1 year from the date of receipt, and avoid repeat freeze-thaw cycles.

TARGET INFORMATION

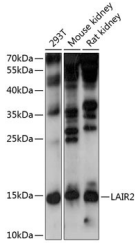
Gene ID	3904
Gene Symbol	LAIR2
Uniprot ID	LAIR2_HUMAN
Immunogen	
Immunogen Region	22-120
Specificity	Recombinant fusion protein containing a sequence corresponding to amino acids 22-120 of human LAIR2 (NP_002279.2).
Immunogen Sequence	QEGALPRPSISAEPGTVISPGSHVTFMCRGPVGVQTFRLEREDRAKYKDSYNVFRLGPSESEARFHIDSVSEGNAGLYRC LYYKPPGWSEHSDFLELLV



Immunofluorescence analysis of paraffin-embedded mouse placenta using LAIR2 Rabbit polyclonal antibody (STJ116588) at dilution of 1:100. Secondary antibody: Cy3 Goat Anti-Rabbit IgG (H+L) at 1:500 dilution. Blue: DAPI for nuclear staining.



Immunofluorescence analysis of paraffin-embedded human placenta using LAIR2 Rabbit polyclonal antibody (STJ116588) at dilution of 1:100. Secondary antibody: Cy3 Goat Anti-Rabbit IgG (H+L) at 1:500 dilution. Blue: DAPI for nuclear staining.



Western blot analysis of various lysates using LAIR2 Rabbit polyclonal antibody (STJ116588) at 1:1000 dilution. Secondary antibody: HRP Goat Anti-Rabbit IgG (H+L) (STJ5000856) at 1:10000 dilution. Lysates/proteins: 25 μ g per lane. Blocking buffer: 3% nonfat dry milk in TBST. Detection: ECL Enhanced Kit. Exposure time: 30s.