

## Anti-SLC25A23 antibody (1-160) (STJ116564)

STJ116564

### GENERAL INFORMATION

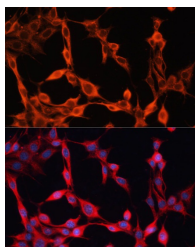
<b>Product Type</b>	Primary antibodies
<b>Short Description</b>	
<b>Applications</b>	WB/IF/ICC/ELISA
<b>Host/Source</b>	Rabbit
<b>Reactivity</b>	Human/Mouse/Rat

### PRODUCT PROPERTIES

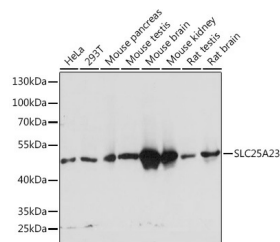
<b>Clonality</b>	Polyclonal
<b>Clone ID</b>	
<b>Concentration</b>	Lot specific
<b>Conjugation</b>	Unconjugated
<b>Purification</b>	Affinity purification
<b>Dilution</b>	WB:1:500-1:2000
<b>Range</b>	IF/ICC:1:50-1:200
	ELISA:Recommended starting concentration is 1 $\mu$ g/mL. Please optimize the concentration based on your specific assay requirements.
<b>Formulation</b>	PBS with 0.01% Thimerosal, 50% Glycerol, pH 7.3.
<b>Isotype</b>	IgG
<b>Storage Instruction</b>	Store at -20°C for up to 1 year from the date of receipt, and avoid repeat freeze-thaw cycles.

### TARGET INFORMATION

<b>Gene ID</b>	79085
<b>Gene Symbol</b>	SLC25A23
<b>Uniprot ID</b>	SCMC3_HUMAN
<b>Immunogen</b>	
<b>Immunogen Region</b>	1-160
<b>Specificity</b>	Recombinant fusion protein containing a sequence corresponding to amino acids 1-160 of human SLC25A23 (NP_077008.2).
<b>Immunogen Sequence</b>	MRGSPGDAERRQRWGRLFEE LDSNKDGRVDVHELRLQGLAR LGGPNPDGAQQGISSEGDA DPDGGDLLEEFSTRYLQEREQ RLLLMFHSLDRNQDGHIDVS EIQQSFRALGISISLEQAEK ILHSMDRDGTMTIDWQEWDRD HFLLSHLENVEDVLYFWKHS



Immunofluorescence analysis of NIH/3T3 cells using SLC25A23 Rabbit polyclonal antibody (STJ116564) at dilution of 1:100. Secondary antibody: Cy3 Goat Anti-Rabbit IgG (H+L) at 1:500 dilution. Blue: DAPI for nuclear staining.



Western blot analysis of various lysates using SLC25A23 Rabbit polyclonal antibody (STJ116564) at 1:1000 dilution. Secondary antibody: HRP Goat Anti-Rabbit IgG (H+L) (STJS000856) at 1:10000 dilution. Lysates/proteins: 25  $\mu$ g per lane. Blocking buffer: 3% nonfat dry milk in TBST. Detection: ECL Basic Kit. Exposure time: 3s.