

Anti-MRPS2 antibody (1-296) (STJ116491)

STJ116491

GENERAL INFORMATION

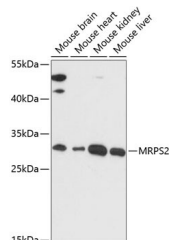
Product Type	Primary antibodies
Short Description	
Applications	WB/IHC-P/ELISA
Host/Source	Rabbit
Reactivity	Mouse

PRODUCT PROPERTIES

Clonality	Polyclonal
Clone ID	
Concentration	Lot specific
Conjugation	Unconjugated
Purification	Affinity purification
Dilution	WB:1:500-1:2000
Range	IHC-P:1:100-1:200 ELISA:Recommended starting concentration is 1 µg/mL. Please optimize the concentration based on your specific assay requirements.
Formulation	PBS with 0.01% Thimerosal, 50% Glycerol, pH 7.3.
Isotype	IgG
Storage Instruction	Store at -20°C for up to 1 year from the date of receipt, and avoid repeat freeze-thaw cycles.

TARGET INFORMATION

Gene ID	51116
Gene Symbol	MRPS2
Uniprot ID	RT02_HUMAN
Immunogen	
Immunogen Region	1-296
Specificity	Recombinant fusion protein containing a sequence corresponding to amino acids 1-296 of human MRPS2 (NP_057118.1).
Immunogen Sequence	MATSSAALPRILGAGARAPS RWLGFLGKATPRPARPSRRT LGSATALMIRESEDSTDFND KILNEPLKHSDFFNVKELFS VRSLFDARVHLGHKAGCRHR FMEPYIFGSRLDHDIDLEQ TATHLQLALNFTAHMAYRKG ILFISRNRFQFSYLIENMAR DCGEYAHTRYFRGMLTNAR LLFGPTVRLPDLIIFLHTLN NIFEPHVAVRDAAKMNIPTV GIVDTNCNPCLITYPVPGN



Western blot analysis of various lysates using MRPS2 Rabbit polyclonal antibody (STJ116491) at 1:3000 dilution. Secondary antibody: HRP Goat Anti-Rabbit IgG (H+L) (STJ5000856) at 1:10000 dilution. Lysates/proteins: 25 µg per lane. Blocking buffer: 3% nonfat dry milk in TBST. Detection: ECL Basic Kit. Exposure time: 90s.

This product is suitable for in-vitro studies under the RESEARCH USE ONLY [RUO] licence. This product must not be used as for diagnostic or other medical purposes.

St John's Laboratory Ltd, Knowledge Dock Business Centre, University Way, London, E16 2RD | Tel: 0208 223 3081