

Anti-SLCO3A1 antibody (440-540) (STJ116488)

STJ116488

GENERAL INFORMATION

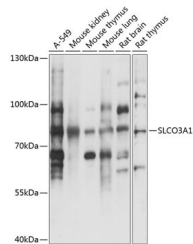
Product Type	Primary antibodies
Short Description	
Applications	WB/ELISA
Host/Source	Rabbit
Reactivity	Human/Mouse/Rat

PRODUCT PROPERTIES

Clonality	Polyclonal
Clone ID	
Concentration	Lot specific
Conjugation	Unconjugated
Purification	Affinity purification
Dilution Range	WB:1:500-1:2000 ELISA:Recommended starting concentration is 1 Mu g/mL. Please optimize the concentration based on your specific assay requirements.
Formulation	PBS with 0.01% Thimerosal, 50% Glycerol, pH 7.3.
Isotype	IgG
Storage Instruction	Store at -20°C for up to 1 year from the date of receipt, and avoid repeat freeze-thaw cycles.

TARGET INFORMATION

Gene ID	28232
Gene Symbol	SLCO3A1
Uniprot ID	SO3A1_HUMAN
Immunogen	
Immunogen Region	440-540
Specificity	Recombinant fusion protein containing a sequence corresponding to amino acids 440-540 of human SLCO3A1 (NP_037404.2).
Immunogen Sequence	FLGCDTGPVAGVTVPYGNST APGSALDPYSPCNNNCECQT DSFTPVCGADGITYLSACFA GCNSTNLTGACLTTPAEN ATVVPKGKCPSPGCQEAFLTF L



Western blot analysis of various lysates using SLCO3A1 Rabbit polyclonal antibody (STJ116488) at 1:3000 dilution. Secondary antibody: HRP Goat Anti-Rabbit IgG (H+L) (STJ5000856) at 1:10000 dilution. Lysates/proteins: 25 Mu g per lane. Blocking buffer: 3% nonfat dry milk in TBST. Detection: ECL Basic Kit. Exposure time: 1s.