

Anti-CLEC4M antibody (71-399) (STJ116481)

STJ116481

GENERAL INFORMATION

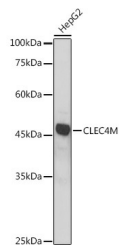
Product Type	Primary antibodies
Short Description	
Applications	WB/IF/ICC/ELISA
Host/Source	Rabbit
Reactivity	Human/Mouse/Rat

PRODUCT PROPERTIES

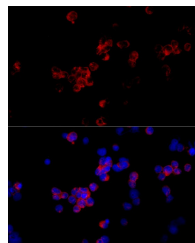
Clonality	Polyclonal
Clone ID	
Concentration	Lot specific
Conjugation	Unconjugated
Purification	Affinity purification
Dilution	WB:1:500-1:1000
Range	IF/CC:1:50-1:200
	ELISA:Recommended starting concentration is 1 μ g/mL. Please optimize the concentration based on your specific assay requirements.
Formulation	PBS with 0.05% Proclin300, 50% Glycerol, pH 7.3.
Isotype	IgG
Storage Instruction	Store at -20°C for up to 1 year from the date of receipt, and avoid repeat freeze-thaw cycles.

TARGET INFORMATION

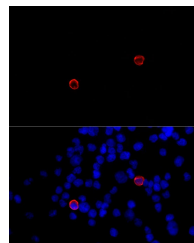
Gene ID	10332
Gene Symbol	CLEC4M
Uniprot ID	CLC4M_HUMAN
Immunogen	
Immunogen Region	71-399
Specificity	A synthetic peptide corresponding to a sequence within amino acids 71-399 of human CLEC4M (NP_055072.3).
Immunogen Sequence	QVSKVPSSLSQEQSEQDAIY QNLTQLKAAVGELSEKSLQ EIYQELTQLKAAVGELPEKS KLQEYQELTRLKAAVGELP EKSKLQEYQELTRLKAAVG ELPEKSKLQEYQELTRLKA AVGELPEKSKLQEYQELTE LKAAVGELPEKSKLQEYQE LTQLKAAVGELPDQSKQQI YQELTDLKTAFERLCRHCPK DWTFQGCNCFMSNSQRNWH DSVTACQEVRAQLVVIKTA



Western blot analysis of extracts of HepG2 cells, using CLEC4M antibody (STJ116481) at 1:1000 dilution. Secondary antibody: HRP Goat Anti-rabbit IgG (H+L) (STJ5000856) at 1:10000 dilution. Lysates/proteins: 25 μ g per lane. Blocking buffer: 3% non-fat dry milk in TBST. Detection: ECL Basic Kit. Exposure time: 90s.



Immunofluorescence analysis of 293T cells using CLEC4M rabbit polyclonal antibody (STJ116481) at dilution of 1:100 (40x lens). Blue: DAPI for nuclear staining.



Immunofluorescence analysis of 293T-CD299 cells using CLEC4M rabbit polyclonal antibody (STJ116481) at dilution of 1:100 (40x lens). Blue: DAPI for nuclear staining.

This product is suitable for in-vitro studies under the RESEARCH USE ONLY [RUO] licence. This product must not be used as for diagnostic or other medical purposes.
St John's Laboratory Ltd, Knowledge Dock Business Centre, University Way, London, E16 2RD | Tel: 0208 223 3081