

Anti-ADAM11 antibody (290-430) (STJ116462)

STJ116462

GENERAL INFORMATION

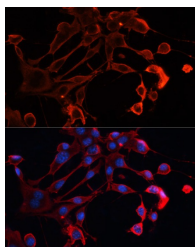
Product Type	Primary antibodies
Short Description	
Applications	WB/IF/ICC/ELISA
Host/Source	Rabbit
Reactivity	Human/Mouse/Rat

PRODUCT PROPERTIES

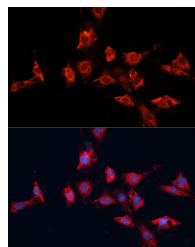
Clonality	Polyclonal
Clone ID	
Concentration	Lot specific
Conjugation	Unconjugated
Purification	Affinity purification
Dilution	WB:1:500-1:2000
Range	IF/CC:1:50-1:200
	ELISA:Recommended starting concentration is 1 µg/mL. Please optimize the concentration based on your specific assay requirements.
Formulation	PBS with 0.01% Thimerosal, 50% Glycerol, pH 7.3.
Isotype	IgG
Storage Instruction	Store at -20°C for up to 1 year from the date of receipt, and avoid repeat freeze-thaw cycles.

TARGET INFORMATION

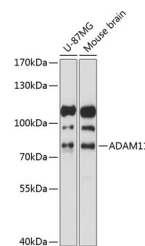
Gene ID	4185
Gene Symbol	ADAM11
Uniprot ID	ADA11_HUMAN
Immunogen	
Immunogen Region	290-430
Specificity	Recombinant fusion protein containing a sequence corresponding to amino acids 290-430 of human ADAM11 (NP_002381.2).
Immunogen Sequence	METWADGDKIQVQDDLLET L ARLMVYRREGLPEPSDATHL FSGRTFQSTSSGAAYVGGIC SLSHGGGVNEYGNMGAMAVT LAQTGLQNLGMMWNKHRSSA GDCKCPDIWLGCIMEDTGFY LPRKFSRCSIDEYNQFLQEG G



Immunofluorescence analysis of NIH/3T3 cells using ADAM11 Rabbit polyclonal antibody (STJ116462) at dilution of 1:100. Secondary antibody: Cy3 Goat Anti-Rabbit IgG (H+L) at 1:500 dilution. Blue: DAPI for nuclear staining.



Immunofluorescence analysis of C6 cells using ADAM11 Rabbit polyclonal antibody (STJ116462) at dilution of 1:100. Secondary antibody: Cy3 Goat Anti-Rabbit IgG (H+L) at 1:500 dilution. Blue: DAPI for nuclear staining.



Western blot analysis of various lysates using ADAM11 Rabbit polyclonal antibody (STJ116462) at 1:1000 dilution. Secondary antibody: HRP Goat Anti-Rabbit IgG (H+L) (STJ5000856) at 1:10000 dilution. Lysates/proteins: 25 µg per lane. Blocking buffer: 3% nonfat dry milk in TBST. Detection: ECL Basic Kit. Exposure time: 15s.