

Anti-GRIN2C antibody (20-350) (STJ116454)

STJ116454

GENERAL INFORMATION

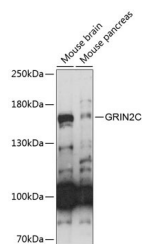
Product Type	Primary antibodies
Short Description	
Applications	WB/ELISA
Host/Source	Rabbit
Reactivity	Mouse

PRODUCT PROPERTIES

Clonality	Polyclonal
Clone ID	
Concentration	Lot specific
Conjugation	Unconjugated
Purification	Affinity purification
Dilution	WB:1:500-1:1000
Range	ELISA:Recommended starting concentration is 1 Mu g/mL. Please optimize the concentration based on your specific assay requirements.
Formulation	PBS with 0.01% Thimerosal, 50% Glycerol, pH 7.3.
Isotype	IgG
Storage	Store at-20°C for up to 1 year from the date of receipt, and avoid repeat freeze-thaw cycles.
Instruction	

TARGET INFORMATION

Gene ID	2905
Gene Symbol	GRIN2C
Uniprot ID	NMDE3_HUMAN
Immunogen	
Immunogen Region	20-350
Specificity	Recombinant fusion protein containing a sequence corresponding to amino acids 20-350 of human GRIN2C (NP_000826.2).
Immunogen Sequence	GLGPGQGEQGMTVAWFSSS GPPQAQFRARLTPQSFLDLP LEIQPLTVGVNTTNPSLLT QICGLLGAAHVHGIVFEDNV DTEAVAQILDFISSQTHVPI LSISGGSVVLTTPKEPGSAF LQLGVSLEQQLQVLFKVLVEE YDWSAFAVITSLHPGHALFL EGVRAVADASHVSWRLLDVV TLELPGGGPRARTQRLRLQL DAPVFVAYCSREEAEVLFAE AAQAGLVGPGHVVLPNLA



Western blot analysis of extracts of various cell lines, using GRIN2C antibody (STJ116454) at 1:1000 dilution. Secondary antibody: HRP Goat Anti-rabbit IgG (H+L) at 1:10000 dilution. Lysates/proteins: 25ug per lane. Blocking buffer: 3% nonfat dry milk in TBST. Detection: ECL Enhanced Kit. Exposure time: 30s.

This product is suitable for in-vitro studies under the RESEARCH USE ONLY [RUO] licence. This product must not be used as for diagnostic or other medical purposes.
St John's Laboratory Ltd, Knowledge Dock Business Centre, University Way, London, E16 2RD | Tel: 0208 223 3081