

## Anti-CYBA antibody (126-195) (STJ116414)

STJ116414

### GENERAL INFORMATION

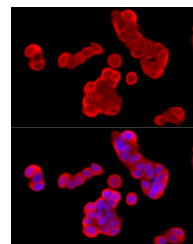
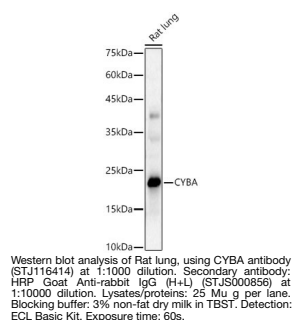
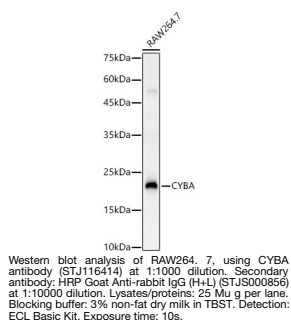
<b>Product Type</b>	Primary antibodies
<b>Short Description</b>	
<b>Applications</b>	WB/IF/ICC/ELISA
<b>Host/Source</b>	Rabbit
<b>Reactivity</b>	Human/Mouse/Rat

### PRODUCT PROPERTIES

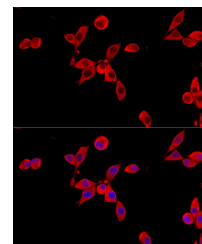
<b>Clonality</b>	Polyclonal
<b>Clone ID</b>	
<b>Concentration</b>	Lot specific
<b>Conjugation</b>	Unconjugated
<b>Purification</b>	Affinity purification
<b>Dilution Range</b>	WB:1:500-1:1000 IF/ICC:1:50-1:200 ELISA:Recommended starting concentration is 1 $\mu$ g/mL. Please optimize the concentration based on your specific assay requirements.
<b>Formulation</b>	PBS with 0.02% Sodium Azide, 50% Glycerol, pH 7.3.
<b>Isotype</b>	IgG
<b>Storage Instruction</b>	Store at -20°C for up to 1 year from the date of receipt, and avoid repeat freeze-thaw cycles.

### TARGET INFORMATION

<b>Gene ID</b>	1535
<b>Gene Symbol</b>	CYBA
<b>Uniprot ID</b>	CY24A_HUMAN
<b>Immunogen</b>	
<b>Immunogen Region</b>	126-195
<b>Specificity</b>	Recombinant fusion protein containing a sequence corresponding to amino acids 126-195 of human CYBA (NP_000092.2).
<b>Immunogen Sequence</b>	VRGEQWTPIEPKPRERPKIG GTIKQPPSNPPPPPAEARK KPSEEEAAVAAGPPGGPQV NPIPVTEVV



Immunofluorescence analysis of MCF7 cells using CYBA rabbit polyclonal antibody (STJ116414) at dilution of 1:100 (40x lens). Blue: DAPI for nuclear staining.



Immunofluorescence analysis of NIH/3T3 cells using CYBA rabbit polyclonal antibody (STJ116414) at dilution of 1:100 (40x lens). Blue: DAPI for nuclear staining.

This product is suitable for in-vitro studies under the RESEARCH USE ONLY [RUO] licence. This product must not be used as for diagnostic or other medical purposes.  
St John's Laboratory Ltd, Knowledge Dock Business Centre, University Way, London, E16 2RD | Tel: 0208 223 3081