

Anti-Phospho-ACLY-S455 antibody (STJ116399)

STJ116399

GENERAL INFORMATION

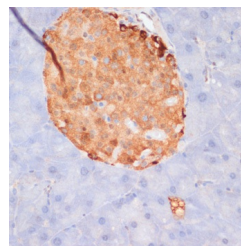
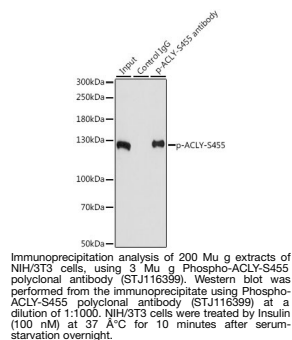
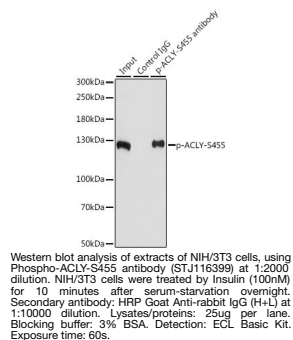
Product Type	Primary antibodies
Short Description	
Applications	WB/IHC-P/IP/ELISA
Host/Source	Rabbit
Reactivity	Human/Mouse/Rat

PRODUCT PROPERTIES

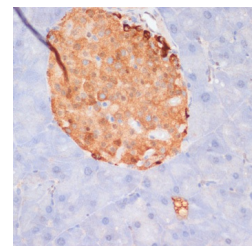
Clonality	Polyclonal
Clone ID	
Concentration	Lot specific
Conjugation	Unconjugated
Purification	Affinity purification
Dilution Range	WB:1:100-1:500 IHC-P:1:50-1:100 IP:0.5 Mu g-4 Mu g antibody for 200 Mu g-400 Mu g extracts of whole cells ELISA:Recommended starting concentration is 1 Mu g/mL. Please optimize the concentration based on your specific assay requirements.
Formulation	PBS with 0.05% Proclin300, 50% Glycerol, pH 7.3.
Isotype	IgG
Storage Instruction	Store at -20°C for up to 1 year from the date of receipt, and avoid repeat freeze-thaw cycles.

TARGET INFORMATION

Gene ID	47
Gene Symbol	ACLY
Uniprot ID	ACLY_HUMAN
Immunogen	RTASFS
Immunogen Region	
Specificity	A synthetic phosphorylated peptide around S455 of human ACLY (NP_001087.2).
Immunogen Sequence	RTASFS



Immunohistochemistry of paraffin-embedded rat pancreas using Phospho-ACLY-S455 antibody (STJ116399) at dilution of 1:100 (40x lens). Perform microwave antigen retrieval with 10 mM Tris/EDTA buffer pH 8.0 before commencing with immunohistochemistry staining protocol.



Immunohistochemistry analysis of Phospho-ACLY-S455 in paraffin-embedded mouse pancreas using Phospho-ACLY-S455 Rabbit polyclonal antibody (STJ116399) at dilution of 1:100 (40x lens). Perform microwave antigen retrieval with 10 mM Tris/EDTA buffer pH 9.0 before commencing with immunohistochemistry staining protocol.

This product is suitable for in-vitro studies under the RESEARCH USE ONLY [RUO] licence. This product must not be used as for diagnostic or other medical purposes.
St John's Laboratory Ltd, Knowledge Dock Business Centre, University Way, London, E16 2RD | Tel: 0208 223 3081