

Anti-Phospho-VASP-S157 antibody (STJ116383)

STJ116383

GENERAL INFORMATION

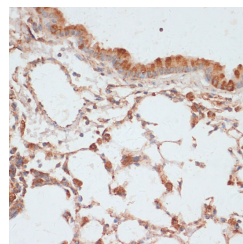
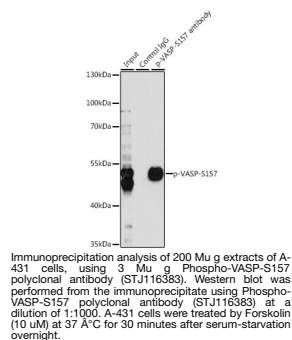
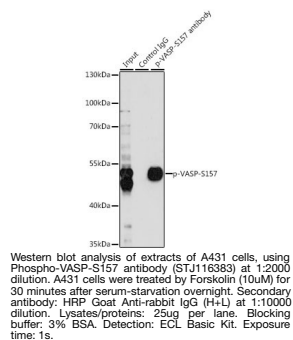
Product Type	Primary antibodies
Short Description	
Applications	WB/IHC-P/IP/ELISA
Host/Source	Rabbit
Reactivity	Human/Mouse/Rat

PRODUCT PROPERTIES

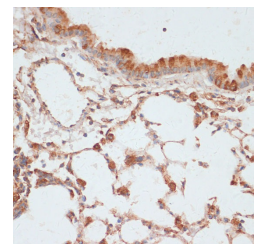
Clonality	Polyclonal
Clone ID	
Concentration	Lot specific
Conjugation	Unconjugated
Purification	Affinity purification
Dilution Range	WB:1:500-1:2000 IHC-P:1:50-1:100 IP:0.5 Mu g-4 Mu g antibody for 200 Mu g extracts of whole cells ELISA:Recommended starting concentration is 1 Mu g/mL. Please optimize the concentration based on your specific assay requirements.
Formulation	PBS with 0.05% Proclin300, 50% Glycerol, pH 7.3.
Isotype	IgG
Storage Instruction	Store at -20°C for up to 1 year from the date of receipt, and avoid repeat freeze-thaw cycles.

TARGET INFORMATION

Gene ID	7408
Gene Symbol	VASP
Uniprot ID	VASP_HUMAN
Immunogen	RVSNA
Immunogen Region	
Specificity	A synthetic phosphorylated peptide around S157 of human Phospho-VASP-S157 (NP_003361.1).
Immunogen Sequence	RVSNA



Immunohistochemistry of paraffin-embedded rat brain using Phospho-VASP-S157 antibody (STJ116383) at dilution of 1:100 (40x lens).



Immunohistochemistry analysis of Phospho-VASP-S157 in paraffin-embedded mouse lung using Phospho-VASP-S157 Rabbit polyclonal antibody (STJ116383) at dilution of 1:100 (40x lens). Perform microwave antigen retrieval with 10 mM Tris/EDTA buffer pH 9.0 before commencing with immunohistochemistry staining protocol.

This product is suitable for in-vitro studies under the RESEARCH USE ONLY [RUO] licence. This product must not be used as for diagnostic or other medical purposes.
St John's Laboratory Ltd, Knowledge Dock Business Centre, University Way, London, E16 2RD | Tel: 0208 223 3081