

Anti-Phospho-POLR2A-S2 antibody (STJ116378)

STJ116378

GENERAL INFORMATION

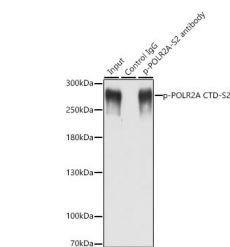
Product Type	Primary antibodies
Short Description	
Applications	WB/IP/ELISA
Host/Source	Rabbit
Reactivity	Human

PRODUCT PROPERTIES

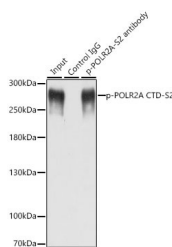
Clonality	Polyclonal
Clone ID	
Concentration	Lot specific
Conjugation	Unconjugated
Purification	Affinity purification
Dilution Range	WB:1:1000-1:2000 IP:0.5 Mu g-4 Mu g antibody for 200 Mu g-400 Mu g extracts of whole cells ELISA:Recommended starting concentration is 1 Mu g/mL. Please optimize the concentration based on your specific assay requirements.
Formulation	PBS with 0.01% Thimerosal, 50% Glycerol, pH 7.3.
Isotype	IgG
Storage Instruction	Store at -20°C for up to 1 year from the date of receipt, and avoid repeat freeze-thaw cycles.

TARGET INFORMATION

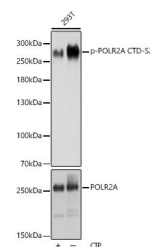
Gene ID	5430
Gene Symbol	POLR2A
Uniprot ID	RBP1_HUMAN
Immunogen	SYSPT
Immunogen Region	
Specificity	A phospho specific peptide corresponding to residues surrounding S2 of human POLR2A CTD repeat YSPTSPS.
Immunogen Sequence	SYSPT



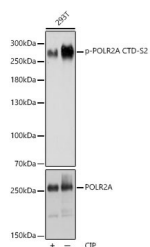
Western blot analysis of extracts of 293T cells, using Phospho-POLR2A-S2 antibody (STJ116378) at 1:1000 dilution. 293T cell lysate were treated by CIP (20uL/400uL) for each 400uL cell lysate at 37 °C for 1 hour or treated by Doxorubicin (0.5uM) for 24 hours. Secondary antibody: HRP Goat Anti-rabbit IgG (H+L) at 1:10000 dilution. Lysates/proteins: 25ug per lane. Blocking buffer: 3% BSA. Detection: ECL Basic Kit. Exposure time: 1s.



Immunoprecipitation analysis of 200 Mu g extracts of MCF-7 cells, using 3 Mu g Phospho-POLR2A CTD-S2 antibody (STJ116378). Western blot was performed from the immunoprecipitate using Phospho-POLR2A-S2 polyclonal antibody (STJ116378) at a dilution of 1:1000. MCF7 cells were treated by nocodazole (50 ng/mL) at 37 °C for 20 hours.



Western blot analysis of extracts of 293T cells, using Phospho-POLR2A-S2 polyclonal antibody (STJ116378) at 1:1000 dilution or POLR2A antibody (A2107). 293T cells were treated by CIP (20uL/400uL) at 37 °C for 1 hour. Secondary antibody: HRP Goat Anti-rabbit IgG (H+L) at 1:10000 dilution. Lysates/proteins: 25ug per lane. Blocking buffer: 3% BSA. Detection: ECL Basic Kit. Exposure time: 1s.



Western blot analysis of lysates from 293T cells, using Phospho-POLR2A CTD-S2 Rabbit polyclonal antibody (STJ116378) at 1:1000 dilution or POLR2A antibody (A2107). 293T cells were treated by CIP (20uL/400uL) at 37 °C for 1 hour. Secondary antibody: HRP Goat Anti-Rabbit IgG (H+L) (STJ5000858) at 1:10000 dilution. Lysates/proteins: 25 Mu g per lane. Blocking buffer: 3% BSA. Detection: ECL Basic Kit. Exposure time: 1s.

This product is suitable for in-vitro studies under the RESEARCH USE ONLY [RUO] licence. This product must not be used as for diagnostic or other medical purposes.
St John's Laboratory Ltd, Knowledge Dock Business Centre, University Way, London, E16 2RD | Tel: 0208 223 3081