

Anti-Phospho-eIF2S1-S51 antibody (STJ116376)

STJ116376

GENERAL INFORMATION

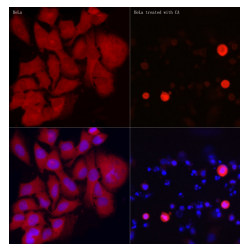
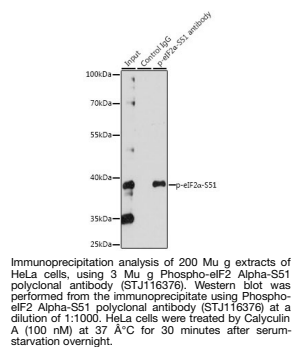
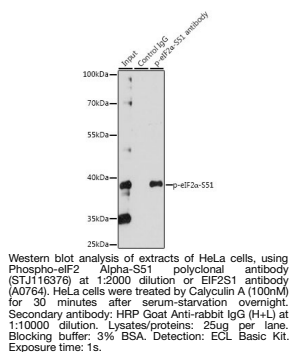
Product Type	Primary antibodies
Short Description	
Applications	WB/IP/ELISA
Host/Source	Rabbit
Reactivity	Human/Mouse/Rat

PRODUCT PROPERTIES

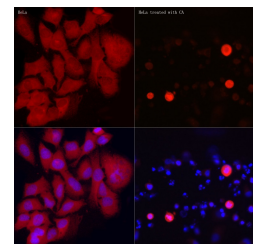
Clonality	Polyclonal
Clone ID	
Concentration	Lot specific
Conjugation	Unconjugated
Purification	Affinity purification
Dilution Range	WB:1:1000-1:2000 IP:0.5 Mu g-4 Mu g antibody for 200 Mu g-400 Mu g extracts of whole cells ELISA:Recommended starting concentration is 1 Mu g/mL. Please optimize the concentration based on your specific assay requirements.
Formulation	PBS with 0.02% Sodium Azide, 50% Glycerol, pH 7.3.
Isotype	IgG
Storage Instruction	Store at -20°C for up to 1 year from the date of receipt, and avoid repeat freeze-thaw cycles.

TARGET INFORMATION

Gene ID	1965
Gene Symbol	EIF2S1
Uniprot ID	IF2A_HUMAN
Immunogen	SELSRR
Immunogen Region	
Specificity	A synthetic phosphorylated peptide around S51 of human eIF2 Alpha (NP_004085.1).
Immunogen Sequence	SELSRR



Immunohistochemistry of paraffin-embedded human colon carcinoma using Phospho-eIF2 Alpha-S51 antibody (STJ116376) at dilution of 1:150 (40x lens).



Immunofluorescence analysis of HeLa and HeLa treated with CA cells using Phospho-eIF2 Alpha-S51 Rabbit polyclonal antibody (STJ116376) at dilution of 1:50 (40x lens). Secondary antibody: Cy3 Goat Anti-Rabbit IgG (H+L) at 1:500 dilution. Blue: DAPI for nuclear staining.

This product is suitable for in-vitro studies under the RESEARCH USE ONLY [RUO] licence. This product must not be used as for diagnostic or other medical purposes.
St John's Laboratory Ltd, Knowledge Dock Business Centre, University Way, London, E16 2RD | Tel: 0208 223 3081