

Anti-Phospho-CAV1-Y14 antibody (STJ116375)

STJ116375

GENERAL INFORMATION

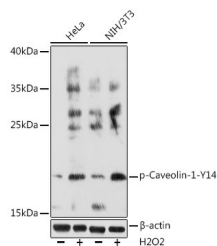
Product Type	Primary antibodies
Short Description	
Applications	WB/ELISA
Host/Source	Rabbit
Reactivity	Human/Mouse

PRODUCT PROPERTIES

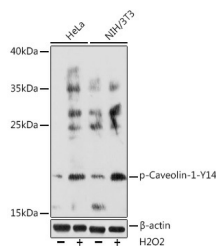
Clonality	Polyclonal
Clone ID	
Concentration	Lot specific
Conjugation	Unconjugated
Purification	Affinity purification
Dilution Range	WB:1:1000-1:2000 ELISA:Recommended starting concentration is 1 µg/mL. Please optimize the concentration based on your specific assay requirements.
Formulation	PBS with 0.05% Proclin300, 50% Glycerol, pH 7.3.
Isotype	IgG
Storage Instruction	Store at -20°C for up to 1 year from the date of receipt, and avoid repeat freeze-thaw cycles.

TARGET INFORMATION

Gene ID	857
Gene Symbol	CAV1
Uniprot ID	CAV1_HUMAN
Immunogen	HLYTV
Immunogen Region	
Specificity	A synthetic phosphorylated peptide around Y14 of human Caveolin-1 (NP_001744.2).
Immunogen Sequence	HLYTV



Western blot analysis of extracts of various cell lines, using Phospho-Caveolin-1-Y14 rabbit polyclonal antibody (STJ116375) at 1:1000 dilution. Both HeLa cells and NIH/3T3 cells were treated by Hydrogen Peroxide (2 nM) at 37 °C for 15 minutes after serum-starvation overnight. Secondary antibody: HRP Goat Anti-rabbit IgG (H+L) at 1:10000 dilution. Lysates/proteins: 25 µg per lane. Blocking buffer: 3% BSA. Detection: ECL Basic Kit. Exposure time: 120s.



Western blot analysis of various lysates using Phospho-Caveolin-1-Y14 Rabbit polyclonal antibody (STJ116375) at 1:1000 dilution. Both HeLa cells and NIH/3T3 cells were treated by Hydrogen Peroxide (2 nM) at 37 °C for 15 minutes after serum-starvation overnight. Secondary antibody: HRP Goat Anti-Rabbit IgG (H+L) (STJS000856) at 1:10000 dilution. Lysates/proteins: 25 µg per lane. Blocking buffer: 3% BSA. Detection: ECL Basic Kit. Exposure time: 120s.

This product is suitable for in-vitro studies under the RESEARCH USE ONLY [RUO] licence. This product must not be used as for diagnostic or other medical purposes.
St John's Laboratory Ltd, Knowledge Dock Business Centre, University Way, London, E16 2RD | Tel: 0208 223 3081