

Anti-ST8SIA1 antibody (49-270) (STJ116365)

STJ116365

GENERAL INFORMATION

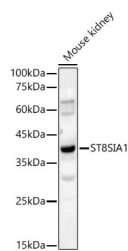
Product Type	Primary antibodies
Short Description	
Applications	WB/ELISA
Host/Source	Rabbit
Reactivity	Mouse

PRODUCT PROPERTIES

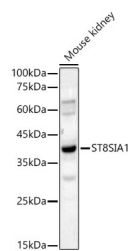
Clonality	Polyclonal
Clone ID	
Concentration	Lot specific
Conjugation	Unconjugated
Purification	Affinity purification
Dilution	WB:1:2000-1:9000
Range	ELISA:Recommended starting concentration is 1 Mu g/mL. Please optimize the concentration based on your specific assay requirements.
Formulation	PBS with 0.05% Proclin300, 50% Glycerol, pH 7.3.
Isotype	IgG
Storage	Store at -20°C for up to 1 year from the date of receipt, and avoid repeat freeze-thaw cycles.
Instruction	

TARGET INFORMATION

Gene ID	6489
Gene Symbol	ST8SIA1
Uniprot ID	SIA8A_HUMAN
Immunogen	
Immunogen Region	49-270
Specificity	Recombinant fusion protein containing a sequence corresponding to amino acids 49-270 of human ST8SIA1 (NP_003025.1).
Immunogen Sequence	YRLPNEKEIVQGVLLQQGTAW RRNQTAARAFRKQMEDCCDP AHLFAMTKMNSPMGKSMWYD GEFLYSFTIDNSTYSLFPQA TPFQLPLKKCAVVGNGGILK KSGCGRQIDEANFVMRCNLP PLSSEYTKDVGSKSQLVTAN PSIRQRFRQNLLWSRKTFFD NMKIYNHSYIYMPAFSMKTG TEPSLRVYYTLSDV/GANQTV LFANPNFLRSIGKFWKSRGI HA



Western blot analysis of extracts of various cell lines, using ST8SIA1 antibody (STJ116365) at 1:3000 dilution. Secondary antibody: HRP Goat Anti-rabbit IgG (H+L) at 1:10000 dilution. Lysates/proteins: 25ug per lane. Blocking buffer: 3% non-fat dry milk in TBST. Detection: ECL Basic Kit. Exposure time: 90s.



Western blot analysis of lysates from Mouse kidney, using ST8SIA1 Rabbit polyclonal antibody (STJ116365) at 1:3000 dilution. Secondary antibody: HRP Goat Anti-Rabbit IgG (H+L) (STJS000856) at 1:10000 dilution. Lysates/proteins: 25 Mu g per lane. Blocking buffer: 3% nonfat dry milk in TBST. Detection: ECL Basic Kit. Exposure time: 90s.

This product is suitable for in-vitro studies under the RESEARCH USE ONLY [RUO] licence. This product must not be used as for diagnostic or other medical purposes.
St John's Laboratory Ltd, Knowledge Dock Business Centre, University Way, London, E16 2RD | Tel: 0208 223 3081