

Anti-ERC1 antibody (700-850) (STJ116361)
STJ116361

GENERAL INFORMATION

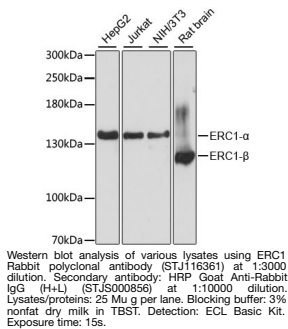
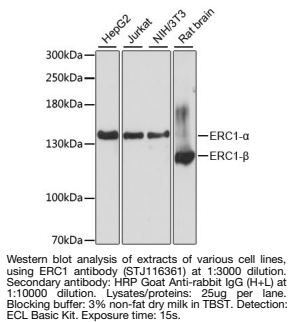
Product Type	Primary antibodies
Short Description	
Applications	WB/ELISA
Host/Source	Rabbit
Reactivity	Human/Mouse/Rat

PRODUCT PROPERTIES

Clonality	Polyclonal
Clone ID	
Concentration	Lot specific
Conjugation	Unconjugated
Purification	Affinity purification
Dilution	WB:1:500-1:2000
Range	ELISA:Recommended starting concentration is 1 Mu g/mL. Please optimize the concentration based on your specific assay requirements.
Formulation	PBS with 0.01% Thimerosal, 50% Glycerol, pH 7.3.
Isotype	IgG
Storage	Store at-20°C for up to 1 year from the date of receipt, and avoid repeat freeze-thaw cycles.
Instruction	

TARGET INFORMATION

Gene ID	23085
Gene Symbol	ERC1
Uniprot ID	RB6I2_HUMAN
Immunogen	
Immunogen Region	700-850
Specificity	Recombinant fusion protein containing a sequence corresponding to amino acids 700-850 of human ERC1 (NP_829884.1). EIALEQKKEECLKMESQLKK AHEAALARASPEMSDRIQH LEREITRYKDESSKAQAEVD RLLEILKEVENEKNDKDKKI
Immunogen Sequence	AELERQVKDQNKKVANLKHK EQVEKKKSAQMLEEARRED NLNDSSQQLQDSLRRKKDDRI EELEEALRESV



This product is suitable for in-vitro studies under the RESEARCH USE ONLY [RUO] licence. This product must not be used as for diagnostic or other medical purposes.
St John's Laboratory Ltd, Knowledge Dock Business Centre, University Way, London, E16 2RD | Tel: 0208 223 3081