

Anti-HECTD1 antibody (2518-2610) (STJ116358)

STJ116358

GENERAL INFORMATION

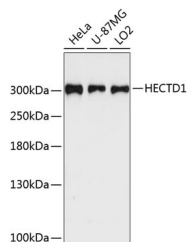
Product Type	Primary antibodies
Short Description	
Applications	WB/ELISA
Host/Source	Rabbit
Reactivity	Human

PRODUCT PROPERTIES

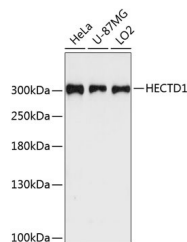
Clonality	Polyclonal
Clone ID	
Concentration	Lot specific
Conjugation	Unconjugated
Purification	Affinity purification
Dilution Range	WB:1:500-1:2000 ELISA:Recommended starting concentration is 1 µg/mL. Please optimize the concentration based on your specific assay requirements.
Formulation	PBS with 0.01% Thimerosal, 50% Glycerol, pH 7.3.
Isotype	IgG
Storage Instruction	Store at -20°C for up to 1 year from the date of receipt, and avoid repeat freeze-thaw cycles.

TARGET INFORMATION

Gene ID	25831
Gene Symbol	HECTD1
Uniprot ID	HECD1_HUMAN
Immunogen	
Immunogen Region	2518-2610
Specificity	Recombinant fusion protein containing a sequence corresponding to amino acids 2518-2610 of human HECTD1 (NP_056197.3).
Immunogen Sequence	PGFLRFVRVLCGMSSDERKA FLQFTTGCSTLPPGGLANLH PRLTVVRKVDATDASYPVSN TCVHYLKLPEYSSEIMRER LLAATMEKGFHLN



Western blot analysis of extracts of various cell lines, using HECTD1 antibody (STJ116358) at 1:3000 dilution. Secondary antibody: HRP Goat Anti-rabbit IgG (H+L) at 1:10000 dilution. Lysates/proteins: 25 µg per lane. Blocking buffer: 3% non-fat dry milk in TBST. Detection: ECL Enhanced Kit. Exposure time: 90s.



Western blot analysis of various lysates using HECTD1 Rabbit polyclonal antibody (STJ116358) at 1:3000 dilution. Secondary antibody: HRP Goat Anti-Rabbit IgG (H+L) (STJ5000656) at 1:10000 dilution. Lysates/proteins: 25 µg per lane. Blocking buffer: 3% nonfat dry milk in TBST. Detection: ECL Enhanced Kit. Exposure time: 90s.

This product is suitable for in-vitro studies under the RESEARCH USE ONLY [RUO] licence. This product must not be used as for diagnostic or other medical purposes.
St John's Laboratory Ltd, Knowledge Dock Business Centre, University Way, London, E16 2RD | Tel: 0208 223 3081