

Anti-TOM1 antibody (314-493) (STJ116355)

STJ116355

GENERAL INFORMATION

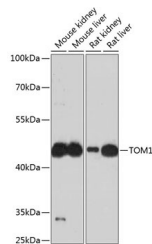
Product Type	Primary antibodies
Short Description	
Applications	WB/ELISA
Host/Source	Rabbit
Reactivity	Mouse/Rat

PRODUCT PROPERTIES

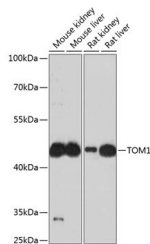
Clonality	Polyclonal
Clone ID	
Concentration	Lot specific
Conjugation	Unconjugated
Purification	Affinity purification
Dilution	WB:1:500-1:2000
Range	ELISA:Recommended starting concentration is 1 μ g/mL. Please optimize the concentration based on your specific assay requirements.
Formulation	PBS with 0.01% Thimerosal, 50% Glycerol, pH 7.3.
Isotype	IgG
Storage	Store at -20°C for up to 1 year from the date of receipt, and avoid repeat freeze-thaw cycles.
Instruction	

TARGET INFORMATION

Gene ID	10043
Gene Symbol	TOM1
Uniprot ID	TOM1_HUMAN
Immunogen	
Immunogen Region	314-493
Specificity	Recombinant fusion protein containing a sequence corresponding to amino acids 314-493 of human TOM1 (NP_001129204.1).
Immunogen Sequence	SEAEPAADLIDMGPDPAATG NLSSQLAGMNLGSSSVRAGL QSLEASGRLEDEFDMFALTR GSSLADQRKEVKYEAPQATD GLAGALDARQQSTGAIPVTQ ACLMEDIEQWLSTDVGND AE EPKGV TSEGKFDKFLEERAK AADRLPNLSSPSAEGPPGPP SGPAPRKKTQEKDDMLFAL



Western blot analysis of extracts of various cell lines, using TOM1 antibody (STJ116355) at 1:3000 dilution. Secondary antibody: HRP Goat Anti-rabbit IgG (H+L) at 1:10000 dilution. Lysates/proteins: 25 μ g per lane. Blocking buffer: 3% non-fat dry milk in TBST. Detection: ECL Basic Kit. Exposure time: 90s.



Western blot analysis of various lysates using TOM1 Rabbit polyclonal antibody (STJ116355) at 1:3000 dilution. Secondary antibody: HRP Goat Anti-Rabbit IgG (H+L) (STJS000856) at 1:10000 dilution. Lysates/proteins: 25 μ g per lane. Blocking buffer: 3% nonfat dry milk in TBST. Detection: ECL Basic Kit. Exposure time: 90s.

This product is suitable for in-vitro studies under the RESEARCH USE ONLY [RUO] licence. This product must not be used as for diagnostic or other medical purposes.
St John's Laboratory Ltd, Knowledge Dock Business Centre, University Way, London, E16 2RD | Tel: 0208 223 3081