

Anti-FAM65B antibody (1-210) (STJ116351)

STJ116351

GENERAL INFORMATION

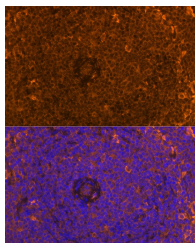
Product Type	Primary antibodies
Short Description	
Applications	WB/IF/ICC/ELISA
Host/Source	Rabbit
Reactivity	Human/Mouse/Rat

PRODUCT PROPERTIES

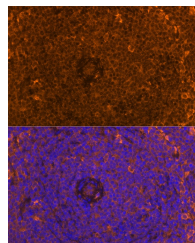
Clonality	Polyclonal
Clone ID	
Concentration	Lot specific
Conjugation	Unconjugated
Purification	Affinity purification
Dilution	WB:1:500-1:2000
Range	IF/CC:1:50-1:200
	ELISA:Recommended starting concentration is 1 μ g/mL. Please optimize the concentration based on your specific assay requirements.
Formulation	PBS with 0.01% Thimerosal, 50% Glycerol, pH 7.3.
Isotype	IgG
Storage Instruction	Store at -20°C for up to 1 year from the date of receipt, and avoid repeat freeze-thaw cycles.

TARGET INFORMATION

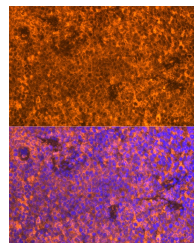
Gene ID	9750
Gene Symbol	RIPOR2
Uniprot ID	RIPR2_HUMAN
Immunogen	
Immunogen Region	1-210
Specificity	Recombinant fusion protein containing a sequence corresponding to amino acids 1-210 of human FAM65B (NP_056948.2).
Immunogen Sequence	MLVGSQSFSPGGPNIIRSQ SFAGFSGQLQERRSRCNSFIE NSSALKKPQAKLKKMHN LGH KNNPPKEPQPKRVEEVYRA LKNGLD EYLVHQTELDKLT AQLKDMKRNSRLGVLYDL DK QIKTIERYMRRLEFHISKVD ELYEAYCIQRR LQDGASKMK QAFATSPASKAARES LTEIN RSFKEYTENMCTIEVELENL LGFESIKMKG



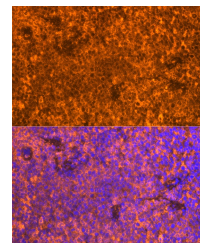
Western blot analysis of extracts of various cell lines, using FAM65B antibody (STJ116351) at 1:3000 dilution. Secondary antibody: HRP Goat Anti-rabbit IgG (H+L) at 1:10000 dilution. Lysates/proteins: 25 μ g per lane. Blocking buffer: 3% non-fat dry milk in TBST. Detection: ECL Basic Kit. Exposure time: 90s.



Immunofluorescence analysis of paraffin-embedded Rat spleen using FAM65B Rabbit polyclonal antibody (STJ116351) at dilution of 1:100. Secondary antibody: Cy3 Goat Anti-Rabbit IgG (H+L) at 1:500 dilution. Blue: DAPI for nuclear staining.



Immunofluorescence analysis of mouse spleen using FAM65B antibody (STJ116351) at dilution of 1:100. Blue: DAPI for nuclear staining.



Immunofluorescence analysis of paraffin-embedded Mouse spleen using FAM65B Rabbit polyclonal antibody (STJ116351) at dilution of 1:100. Secondary antibody: Cy3 Goat Anti-Rabbit IgG (H+L) at 1:500 dilution. Blue: DAPI for nuclear staining.

This product is suitable for in-vitro studies under the RESEARCH USE ONLY [RUO] licence. This product must not be used as for diagnostic or other medical purposes.
St John's Laboratory Ltd, Knowledge Dock Business Centre, University Way, London, E16 2RD | Tel: 0208 223 3081