

Anti-PSPC1 antibody (1-70) (STJ116347)

STJ116347

GENERAL INFORMATION

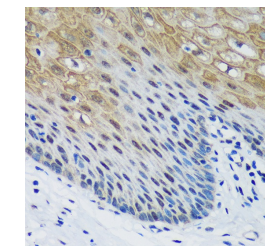
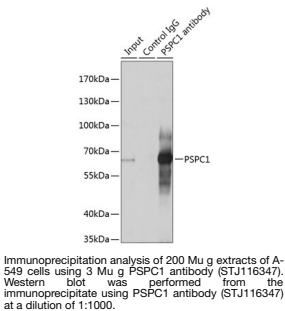
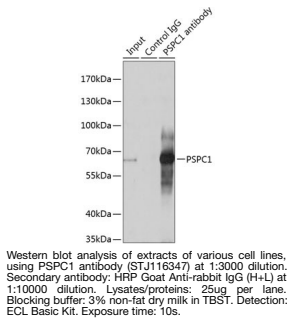
Product Type	Primary antibodies
Short Description	
Applications	WB/IHC-P/IP/ELISA
Host/Source	Rabbit
Reactivity	Human/Mouse/Rat

PRODUCT PROPERTIES

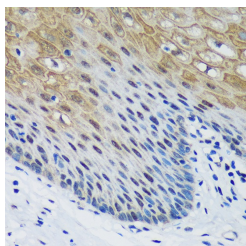
Clonality	Polyclonal
Clone ID	
Concentration	Lot specific
Conjugation	Unconjugated
Purification	Affinity purification
Dilution Range	WB:1:500-1:2000 IHC-P:1:50-1:200 IP:0.5 Mu g-4 Mu g antibody for 200 Mu g-400 Mu g extracts of whole cells ELISA:Recommended starting concentration is 1 Mu g/mL. Please optimize the concentration based on your specific assay requirements.
Formulation	PBS with 0.05% Proclin300, 50% Glycerol, pH 7.3.
Isotype	IgG
Storage Instruction	Store at -20°C for up to 1 year from the date of receipt, and avoid repeat freeze-thaw cycles.

TARGET INFORMATION

Gene ID	55269
Gene Symbol	PSPC1
Uniprot ID	PSPC1_HUMAN
Immunogen	
Immunogen Region	1-70
Specificity	Recombinant fusion protein containing a sequence corresponding to amino acids 1-70 of human PSPC1 (NP_001035879.1).
Immunogen Sequence	MMLRGNLKVRIEKNPARLR ALESAVGESEPAAMALA LAGEPAPPAPAPPEDHPDEE MGTIDIKSF



Immunohistochemistry of paraffin-embedded mouse testis using PSPC1 rabbit polyclonal antibody (STJ116347) at dilution of 1:100 (40x lens).



Immunohistochemistry analysis of PSPC1 in paraffin-embedded Human esophageal using PSPC1 Rabbit polyclonal antibody (STJ116347) at dilution of 1:100 (40x lens). Perform microwave antigen retrieval with 10 mM PBS buffer pH 7.2 before commencing with immunohistochemistry staining protocol.

This product is suitable for in-vitro studies under the RESEARCH USE ONLY [RUO] licence. This product must not be used as for diagnostic or other medical purposes.
St John's Laboratory Ltd, Knowledge Dock Business Centre, University Way, London, E16 2RD | Tel: 0208 223 3081