

Anti-MCTS1 antibody (1-181) (STJ116340)

STJ116340

GENERAL INFORMATION

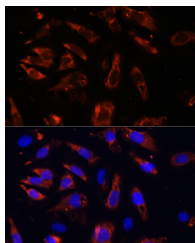
Product Type	Primary antibodies
Short Description	
Applications	WB/IF/ICC/ELISA
Host/Source	Rabbit
Reactivity	Human/Mouse/Rat

PRODUCT PROPERTIES

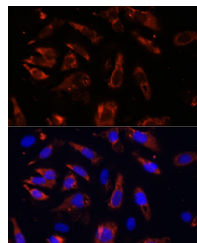
Clonality	Polyclonal
Clone ID	
Concentration	Lot specific
Conjugation	Unconjugated
Purification	Affinity purification
Dilution	WB:1:500-1:2000
Range	IF/CC:1:50-1:200
	ELISA:Recommended starting concentration is 1 μ g/mL. Please optimize the concentration based on your specific assay requirements.
Formulation	PBS with 0.01% Thimerosal, 50% Glycerol, pH 7.3.
Isotype	IgG
Storage Instruction	Store at -20°C for up to 1 year from the date of receipt, and avoid repeat freeze-thaw cycles.

TARGET INFORMATION

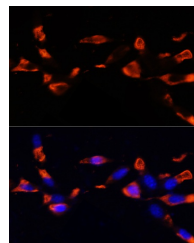
Gene ID	28985
Gene Symbol	MCTS1
Uniprot ID	MCTS1_HUMAN
Immunogen	
Immunogen Region	1-181
Specificity	Recombinant fusion protein containing a sequence corresponding to amino acids 1-181 of human MCTS1 (NP_054779.1).
Immunogen Sequence	MFKKFDEKENVSNICQLKTS VIKGIKNQLIEQFPGIEPWL NQIMPKKDPVKIVRCHEHIE ILTVNGELLFFRQREGPFYP TLRLHLHKYPFILPHQQVDKG AIKFVLSGANIMCPGLTSPG AKLYPAAVDTIVAIMAEGKQ HALCVGVMKMSAEDIEKVNK GIGIENIHYLNDGLWHMKTY K



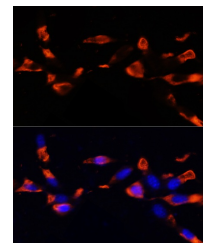
Western blot analysis of extracts of various cell lines, using MCTS1 antibody (STJ116340) at 1:3000 dilution. Secondary antibody: HRP Goat Anti-rabbit IgG (H+L) at 1:10000 dilution. Lysates/proteins: 25 μ g per lane. Blocking buffer: 3% non-fat dry milk in TBST. Detection: ECL Enhanced Kit. Exposure time: 90s.



Immunofluorescence analysis of U-2OS cells using MCTS1 Rabbit polyclonal antibody (STJ116340) at dilution of 1:100 (40x lens). Blue: DAPI for nuclear staining.



Immunofluorescence analysis of C6 cells using MCTS1 antibody (STJ116340) at dilution of 1:100 (40x lens). Blue: DAPI for nuclear staining.



Immunofluorescence analysis of NIH/3T3 cells using MCTS1 Rabbit polyclonal antibody (STJ116340) at dilution of 1:100 (40x lens). Blue: DAPI for nuclear staining.