

Anti-PASK antibody (1194-1323) (STJ116338)

STJ116338

GENERAL INFORMATION

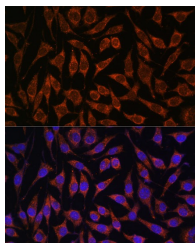
| | |
|--------------------------|-----------------------|
| Product Type | Primary antibodies |
| Short Description | |
| Applications | WB/IHC-P/IF/ICC/ELISA |
| Host/Source | Rabbit |
| Reactivity | Human/Mouse/Rat |

PRODUCT PROPERTIES

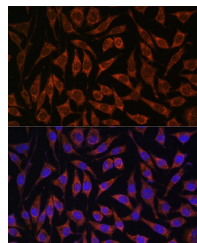
| | |
|-----------------------|---|
| Clonality | Polyclonal |
| Clone ID | |
| Concentration | Lot specific |
| Conjugation | Unconjugated |
| Purification | Affinity purification |
| Dilution Range | WB:1:500-1:2000 IHC-P:1:50-1:200 IF/ICC:1:50-1:200 ELISA:Recommended starting concentration is 1 Mu g/mL. Please optimize the concentration based on your specific assay requirements. |
| Formulation | PBS with 0.01% Thimerosal, 50% Glycerol, pH 7.3. |
| Isotype | IgG |
| Storage | Store at -20°C for up to 1 year from the date of receipt, and avoid repeat freeze-thaw cycles. |
| Instruction | |

TARGET INFORMATION

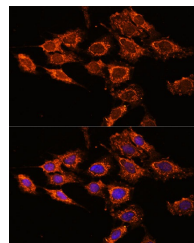
| | |
|---------------------------|--|
| Gene ID | 23178 |
| Gene Symbol | PASK |
| Uniprot ID | PASK_HUMAN |
| Immunogen | |
| Region | 1194-1323 |
| Specificity | Recombinant fusion protein containing a sequence corresponding to amino acids 1194-1323 of human PASK (NP_055963.2). |
| Immunogen Sequence | YTLVFEEHPFCELEETVEAA IHPPYLVSKELMSLVSGLLQ PVPERRTTLEKLVTDPWVTQ PVNLADYTWEVFRVKNKPES GVLSAASLEMGNRSLSDVAQ AQELCGGPVPGEPAPNGQGCL HPGDPRLLTS |



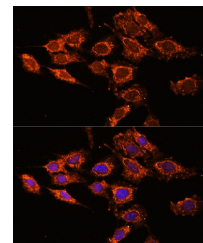
Western blot analysis of extracts of various cell lines, using PASK antibody (STJ116338) at 1:3000 dilution. Secondary antibody: HRP Goat Anti-Rabbit IgG (H+L) at 1:10000 dilution. Lysates/proteins: 25ug per lane. Blocking buffer: 3% non-fat dry milk in TBST. Detection: ECL Basic Kit. Exposure time: 90s.



Immunofluorescence analysis of L929 cells using PASK Rabbit polyclonal antibody (STJ116338) at dilution of 1:100. Secondary antibody: Cy3 Goat Anti-Rabbit IgG (H+L) at 1:500 dilution. Blue: DAPI for nuclear staining.



Immunohistochemistry of paraffin-embedded Human placenta using PASK rabbit polyclonal antibody (STJ116338) at dilution of 1:100 (40x lens).



Immunofluorescence analysis of C6 cells using PASK Rabbit polyclonal antibody (STJ116338) at dilution of 1:100. Secondary antibody: Cy3 Goat Anti-Rabbit IgG (H+L) at 1:500 dilution. Blue: DAPI for nuclear staining.

This product is suitable for in-vitro studies under the RESEARCH USE ONLY [RUO] licence. This product must not be used as for diagnostic or other medical purposes.

St John's Laboratory Ltd, Knowledge Dock Business Centre, University Way, London, E16 2RD | Tel: 0208 223 3081