

Anti-NHP2 antibody (1-153) (STJ116289)

STJ116289

GENERAL INFORMATION

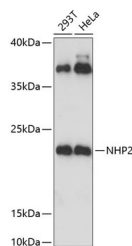
Product Type	Primary antibodies
Short Description	
Applications	WB/ELISA
Host/Source	Rabbit
Reactivity	Human/Rat

PRODUCT PROPERTIES

Clonality	Polyclonal
Clone ID	
Concentration	Lot specific
Conjugation	Unconjugated
Purification	Affinity purification
Dilution	WB:1:500-1:2000
Range	ELISA:Recommended starting concentration is 1 Mu g/mL. Please optimize the concentration based on your specific assay requirements.
Formulation	PBS with 0.01% Thimerosal, 50% Glycerol, pH 7.3.
Isotype	IgG
Storage	Store at -20°C for up to 1 year from the date of receipt, and avoid repeat freeze-thaw cycles.
Instruction	

TARGET INFORMATION

Gene ID	55651
Gene Symbol	NHP2
Uniprot ID	NHP2_HUMAN
Immunogen	
Immunogen Region	1-153
Specificity	Recombinant fusion protein containing a sequence corresponding to amino acids 1-153 of human NHP2 (NP_060308.1).
Immunogen Sequence	MTKIKADPDGPEAQAEACSG ERTYQELLVNQNPQAQPLAS RRLTRKLYKCIKKAVKQKQI RRGVKEVQKFVNKGEKGIMV LAGDTLPIEVYCHLPVMCED RNLPLYVYIPSKTDLGAAAGS KRPTCVIMVKPHEEYQEAYD ECLEEVQSLPLPL



Western blot analysis of various lysates using NHP2 Rabbit polyclonal antibody (STJ116289) at 1:3000 dilution. Secondary antibody: HRP Goat Anti-Rabbit IgG (H+L) (STJS000856) at 1:10000 dilution. Lysates/proteins: 25 Mu g per lane. Blocking buffer: 3% nonfat dry milk in TBST. Detection: ECL Enhanced Kit. Exposure time: 60s.

This product is suitable for in-vitro studies under the RESEARCH USE ONLY [RUO] licence. This product must not be used as for diagnostic or other medical purposes.
St John's Laboratory Ltd, Knowledge Dock Business Centre, University Way, London, E16 2RD | Tel: 0208 223 3081